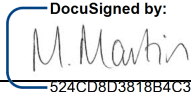


# Annual Review

## Werris Creek Coal Mine

<b>Name of operation</b>	Werris Creek Coal Pty Limited
<b>Name of operator</b>	Werris Creek Coal Pty Limited
<b>Development consent/project approval number</b>	Project Approval 10_0059 Modification 11
<b>Name of holder of development consent/project approval</b>	Werris Creek Coal Pty Limited
<b>Mining lease number</b>	ML1563 (Creek Resources Pty Ltd & Betalpha Pty Ltd); ML1671, ML1672 (Werris Creek Coal Pty Limited)
<b>Name of holder of mining lease</b>	Whitehaven Coal Mining Pty Ltd
<b>Water licence number</b>	WAL29506 (Betalpha Pty Ltd); WAL32224 (Werris Creek Coal Pty Ltd)
<b>Name of holder of water licence</b>	Whitehaven Coal Mining Pty Ltd
<b>FWP start date</b>	1/1/2025
<b>Annual review start date</b>	1 January 2025
<b>Annual review end date</b>	31 December 2025
<p><b><i>I, Megan Martin, certify that this audit report is a true and accurate record of the compliance status of Werris Creek Coal Mine for the period 1<sup>st</sup> January 2025 to 31<sup>st</sup> December 2025, and that I am authorised to make this statement on behalf of Whitehaven Coal Mining Pty Ltd.</i></b></p> <p><i>Note. a) The Annual Review is an 'environmental audit' for the purposes of section 122B (2) of the Environmental Planning and Assessment Act 1979. Section 122E provides that a person must not include false or misleading information (or provide information for inclusion in) an audit report produced to the Minister in connection with an environmental audit if the person knows that the information is false or misleading in a material respect. The maximum penalty is, in the case of a corporation, \$1 million and for an individual, \$250,000.</i></p> <p><i>b) The Crimes Act 1900 contains other offences relating to false and misleading information: section 192G (Intention to defraud by false or misleading statement—maximum penalty 5 years imprisonment); sections 307A, 307B and 307C (False or misleading applications/information/documents—maximum penalty 2 years imprisonment or \$22,000, or both).</i></p>	
<b>Name of authorised reporting officer</b>	Megan Martin
<b>Title of authorised reporting officer</b>	Manager of Environment and Mine Rehabilitation -Gunnedah Open Cut Operations
<b>Signature of authorised reporting officer</b>	DocuSigned by:  <small>524CD8D3818B4C3...</small>
<b>Date</b>	31 March 2026

**TABLE OF CONTENTS**

<b>1</b>	<b>STATEMENT OF COMPLIANCE .....</b>	<b>6</b>
<b>2</b>	<b>INTRODUCTION .....</b>	<b>3</b>
2.1	PROJECT BACKGROUND .....	3
<b>3</b>	<b>APPROVALS .....</b>	<b>5</b>
<b>4</b>	<b>OPERATIONS SUMMARY .....</b>	<b>6</b>
4.1	EXPLORATION ACTIVITIES .....	6
4.2	MINING OPERATIONS .....	6
4.3	COAL HANDLING AND PROCESSING.....	7
4.4	NEXT REPORTING PERIOD.....	7
<b>5</b>	<b>ACTIONS REQUIRED FROM PREVIOUS ANNUAL REVIEW.....</b>	<b>7</b>
<b>6</b>	<b>ENVIRONMENTAL PERFORMANCE .....</b>	<b>7</b>
6.1	NOISE.....	7
6.2	BLASTING .....	11
6.3	AIR QUALITY .....	12
6.4	GREENHOUSE GAS.....	18
6.5	BIODIVERSITY.....	19
6.6	WASTE .....	29
6.7	ENVIRONMENTAL PERFORMANCE SUMMARY .....	30
<b>7</b>	<b>WATER MANAGEMENT .....</b>	<b>31</b>
7.1	WATER TAKE .....	31
7.2	SURFACE WATER MANAGEMENT .....	31
7.3	GROUNDWATER MANAGEMENT .....	37
7.4	SITE WATER BALANCE MODEL VALIDATION .....	47

<b>8</b>	<b>REHABILITATION.....</b>	<b>50</b>
8.1	REHABILITATION PERFORMANCE DURING THE REPORTING PERIOD.....	50
8.2	REHABILITATION MONITORING.....	50
8.3	REHABILITATION TRIALS, PROJECTS, AND INITIATIVES.....	55
8.4	REHABILITATION WORKS PROPOSED FOR NEXT REPORTING PERIOD.....	55
8.5	KEY ISSUES TO ACHIEVING SUCCESSFUL REHABILITATION.....	57
<b>9</b>	<b>COMMUNITY.....</b>	<b>57</b>
9.1	COMMUNITY ENGAGEMENT ACTIVITIES.....	57
9.2	COMMUNITY CONTRIBUTIONS & INITIATIVES.....	57
9.3	COMMUNITY COMPLAINTS.....	59
<b>10</b>	<b>INDEPENDENT AUDITS.....</b>	<b>60</b>
<b>11</b>	<b>INCIDENTS AND NON-COMPLIANCES DURING THE REPORTING PERIOD.....</b>	<b>60</b>
11.1	REPORTABLE INCIDENTS.....	60
11.2	NON-COMPLIANCES.....	60
11.3	REGULATORY ACTIONS.....	61
<b>12</b>	<b>ACTIVITIES TO BE COMPLETED IN THE NEXT REPORTING PERIOD.....</b>	<b>61</b>

**LIST OF TABLES**

Table 1 – Statement of Compliance.....	6
Table 2 – Compliance Status Key.....	2
Table 3 – Non-Compliances.....	2
Table 4 – Key Personnel at WCC.....	3
Table 5 – Licences, Leases and Approvals.....	5
Table 6 – Production Summary.....	6
Table 7 – Measured WCC Noise Levels vs EA Predictions.....	11
Table 8 - TEOM and HVAS Averages.....	14
Table 9 – Deposited Dust Summary for 2025.....	15
Table 10 – Heritage EA Predictions.....	27

Table 11 – Approximate Quantities of Waste Generated in 2025 vs EA Predictions ..... 29

Table 12 – Environmental Performance ..... 30

Table 13 - Water Take 2025 January - December (ML) ..... 31

Table 14 – Quarterly Surface Water Quality for Dams and Offsite Creeks ..... 33

Table 15 - Discharge Water Quality for LDP’s and Offsite Creeks..... 35

Table 16 – WCC Groundwater Monitoring Program ..... 37

Table 17 – Groundwater Monitoring Bore Level Summary – January to December 2025.... 41

Table 18 – Water Balance Inputs and Outputs..... 49

Table 19 – Rehabilitation Status ..... 55

Table 20 – WCC Complaints 2025 ..... 60

**LIST OF FIGURES**

Figure 1 - WCC Site Map ..... 4

Figure 2 - Site Noise Monitoring Locations..... 9

Figure 3 - Blast Monitoring Sites (inactive) and Air Quality Monitoring Network..... 10

Figure 4 - Werris Creek TEOM summary for January – December 2025..... 13

Figure 5 - Werris Creek Mine HVAS PM10 and TSP results for January – December 2025 14

Figure 6 - Air Quality Data vs EA Predictions ..... 17

**Figure 7 - WCC Biodiversity Offset Areas Property Locations ..... 20**

Figure 8 - Surface Water Monitoring Network ..... 36

Figure 9 - Groundwater Monitoring Network..... 39

Figure 10 - Groundwater levels in Quipolly Alluvium compared to cumulative rainfall..... 44

Figure 11 - Groundwater levels in Werrie Basalt compared to cumulative rainfall ..... 46

Figure 12 - Rehab Status Dec 2025 ..... 54

**Figure 13 - Forecast Rehabilitation 2026 ..... 56**

## 1 STATEMENT OF COMPLIANCE

This Annual Review has been prepared to provide a summary of the environmental performance of the Werris Creek Coal Mine (WCC) over the reporting period. The compliance status of the WCC against relevant approvals during the reporting period was assessed as at the end of the reporting period (i.e. 31 December 2025) and is summarised in Table 1.

**Table 1 – Statement of Compliance**

Were all the conditions of the relevant approvals complied with?	Yes/No
Project Approval 10_0059 Modification 4	Yes
Project Approval 10_0059 Modification 5	Yes
Annual Rehabilitation Report (Resource Regulator)	Yes
Mining Lease ML 1563	Yes
Mining Lease ML 1671	Yes
Mining Lease ML 1672	Yes
EPL12290	Yes
WAL29506	Yes
WAL32224	Yes

Any non-compliances during the reporting period are detailed in Table 3 – Non-Compliances

Relevant Approval	Cond. #	Condition Description (Summary)	Compliance Status	Comment	Where addressed in Annual Review
Mining Regulation (2016)	Schedule 8A	Failure to submit a plan rehabilitation objective statement and final landform rehabilitation plan within the required timeframe	Non-compliant	Submitted the plan rehabilitation objective statement and final landform rehabilitation plan by 5:00pm, 9 May 2025  This was submitted on the 11 April 2025.	Section 11

and ranked according to the compliance status key in Table 2. Section 11 provides further details of any non-compliance and actions undertaken or proposed for the following reporting period to prevent re-occurrence and mitigate any potential adverse effects, as well as other compliance triggers that were investigated.

**Table 2 – Compliance Status Key**

Risk Level	Colour Code	Description
High	Non-compliant	Non-compliance with potential for significant environmental consequences, regardless of the likelihood of occurrence
Medium	Non-compliant	Non-compliance with: <ul style="list-style-type: none"> <li>potential for serious environmental consequences, but is unlikely to occur; or</li> <li>potential for moderate environmental consequences, but is likely to occur</li> </ul>
Low	Non-compliant	Non-compliance with: <ul style="list-style-type: none"> <li>potential for moderate environmental consequences, but is unlikely to occur; or</li> <li>potential for low environmental consequences, but is likely to occur</li> </ul>
Administrative non-compliance	Non-compliant	Only to be applied where the non-compliance does not result in any risk of environmental harm (e.g. submitting a report to government later than required under approval conditions)

**Table 3 – Non-Compliances**

Relevant Approval	Cond. #	Condition Description (Summary)	Compliance Status	Comment	Where addressed in Annual Review
Mining Regulation (2016)	Schedule 8A	Failure to submit a plan rehabilitation objective statement and final landform rehabilitation plan within the required timeframe	Non-compliant	Submitted the plan rehabilitation objective statement and final landform rehabilitation plan by 5:00pm, 9 May 2025  This was submitted on the 11 April 2025.	Section 11

## 2 INTRODUCTION

This is the nineteenth Annual Review produced for the Werris Creek Coal Mine (WCC) and has been prepared in accordance with the NSW Department of Planning, Housing and Infrastructure (DPHI) Integrated Mining Policy – Annual Review Guideline, October 2015. This document has been prepared to satisfy the following requirements:

- The Annual Review requirements of the DPHI under the Project Approval PA 10\_0059 (Condition 3 Schedule 5); and
- The routine reporting expectations of DPE Water.
- This report covers the period between 1<sup>st</sup> January 2025 to 31<sup>st</sup> December 2025.

### 2.1 PROJECT BACKGROUND

WCC is located approximately 4 km south of Werris Creek and 11 km north-northwest of Quirindi in northwest slopes and plains region of New South Wales (Figure 1) and lies within a 910 ha area covered by Mining Lease (ML) 1563, ML1671 and ML1672. The current Project Approval (PA) 10\_0059 Modification 5 limits mining until 31<sup>st</sup> December 2032. The Rehabilitation Management plan outlines the projected rehabilitation for the next three years.

WCC is owned and operated by Werris Creek Coal Pty Limited (WCC), a wholly owned subsidiary of Whitehaven Coal Limited (WHC). The key operational personnel responsible for environmental management at WCC are listed in Table 4.

**Table 4 – Key Personnel at WCC**

Name	Title	Contact
Ms Olivia Hulbert	Environmental Advisor	02 6763 6000
Mr Ian Taylor	Superintendent – Operations	02 6763 6000
Mr Daryl Robinson	Operations Manager	02 6763 6000
Mr Dean Scott	General Manager – Open Cut Operations	02 6741 9300



<p><b>WHITEHAVEN COAL</b></p>	<h2>Werris Creek</h2> <p>Mine Site Layout</p>	<p>0 315 630 Meters</p>
<p>Datum MGA2020 Zone 56 Author O.Hulbert</p> <p>Image Feb-24 Date Dec-24 Size/Scale 1:19,000 (A4)</p>		<p>WCC ML Boundary</p> <p>WCC Operational Boundary</p> <p><small>MK001_WCC_Mine Site Layout Dec 2024</small></p>

Figure 1 - WCC Site Map

### 3 APPROVALS

Table 5 provides a summary of the key current licences, leases and approvals that have been obtained for the operation of WCC.

**Table 5 – Licences, Leases and Approvals**

Authority	Approval	Number	Issue	Expiry	Comments
Department of Planning, Housing & Infrastructure (DPHI)	Project Approval	PA10_0059	25/10/2011	31/12/2032	Life of Mine Project allows northerly continuation for entire coal deposit mining up to 2.5Mtpa and 24 hours 7 days per week.
		PA10_0059 MOD1	30/08/2012	31/12/2032	Modification of Biodiversity Offset Area to allow for augmentation of VWD1 to 250ML.
		PA10_0059 MOD2	3/11/2015	31/12/2032	Modification of overburden emplacement design, enabling of a dry processing plant, and to allow void water for agricultural use.
		PA10_0059 MOD3	01/04/2020	31/12/2032	Modification to address the incorrect Project Layout in the Project Approval
		PA10_0059 MOD4	12/05/2021	31/12/2032	Werris Creek Coal Mine Waste Tyre Disposal Modification
		PA10_0059 MOD5	17/12/2024	31/12/2032	Modification of final landform design
NSW Resource Regulator	Mining Lease	ML 1563	23/03/2005	23/03/2026	Mining Lease granted for 21 years. Varied on 17 October 2022 to include the new standard conditions from <i>Mining Regulation 2016</i> , Schedule 8A, Part 2.
		ML 1671	9/03/2012	9/03/2032	Mining Lease granted for 21 years. Varied on 17 October 2022 to include the new standard conditions from <i>Mining Regulation 2016</i> , Schedule 8A, Part 2.
		ML 1672	9/03/2012	9/03/2032	Mining Lease granted for 21 years. Varied on 17 October 2022 to include the new standard conditions from <i>Mining Regulation 2016</i> , Schedule 8A, Part 2.
Environment Protection Authority	Environment Protection Licence	12290	18/04/2005	Anniversary date: 1 April	Varied 2 <sup>nd</sup> September 2022 to update conditions U1 and U2.
Department of Primary Industries – Water	Water Access Licence  (Water Management Act 2000)	WAL29506	21/02/2013	Perpetuity	Aquifer – 50ML annual allocation. DPI-Water reference number 90AL822531. Formerly 90BL252588
		WAL32224	19/06/2013	Perpetuity	Aquifer – 211ML annual allocation. DPI-Water reference number 90AL828344. Formerly 90BL255087

Authority	Approval	Number	Issue	Expiry	Comments
	Water Works Approval	90WA822532	21/02/2013	15/01/2025	Surrendered
		90WA828345	19/06/2013	25/06/2027	Linked to WAL32224. Excavation. Formerly 90PT982872
Australian Department of Agriculture, Water and the Environment	Environment Protection and Biodiversity Conservation Act Approval	2010/5571	21/12/2011	31/12/2032	Authorises impacts on EPBC listed threatened species and communities and listed migratory species
Dam Safety Committee	Declared Dams	Werris VWD1	18/10/2012	Perpetuity	Significant Sunny Day and Flood Consequence
		Werris VWD3	13/12/2012	Perpetuity	
		Werris VWD4	13/12/2012	Perpetuity	
Dam Safety Committee	Undeclared Dams	Werris VWD1 Werris VWD3 Werris VWD4			

## 4 OPERATIONS SUMMARY

### 4.1 EXPLORATION ACTIVITIES

There were no exploration activities undertaken during the reporting period.

### 4.2 MINING OPERATIONS

Table 6 presents the production summary for the previous and current reporting periods and the anticipated production schedule for the next reporting period. ROM coal production is summarised by calendar year to align with PA\_0059 conditions. All units are in tonnes unless otherwise stated.

**Table 6 – Production Summary**

Material	Approved limit	Previous reporting period (actual)	This reporting period (actual)	Next Reporting period (forecast)
Waste Rock / Overburden (bcm)	N/A	3,625,307	1,699,142	250,380
ROM Coal (t) (calendar year)	2,500,000 (PA 10_0059)	527,645	0	0
Coarse reject (t)	N/A	0	0	0
Fine reject (t)	N/A	0	0	0
Saleable Product (t)	5,000,000 (EPL12290)	702,570.90	0	0

\*Estimate

### **4.3 COAL HANDLING AND PROCESSING**

There were no coal handling and processing during the reporting period.

#### **4.3.1 Hours of Operation**

Mining operations are permitted to be conducted up to 24 hours per day, 7 days per week, except for blasting, which is restricted to 9:00am – 5:00pm Monday to Saturday. As of June 2024, Werris Creek shifts were minimised to transition from coal production to rehabilitation. Rehabilitation activities were undertaken during the reporting period within permitted operating times and not on public holidays.

### **4.4 NEXT REPORTING PERIOD**

#### **4.4.1 Exploration**

No exploration drilling was undertaken on the Mining Lease (ML1563, ML1671 and ML1672) during the reporting period, and none planned for the next 12 months.

#### **4.4.2 Mine operations**

Works undertaken at WCC were limited to rehabilitation activities, which included bulk earth moving/shaping using dozers, placement of subsoil and topsoil, seeding, tube stock planting and rock lining of drainage structures. No vegetation clearing activities are planned due to rehabilitation focus, in the unlikely event that vegetation clearing activities are required over the next reporting period, they will be conducted in accordance with the approved associated Management Plans.

#### **4.4.3 Rehabilitation progress**

Updated site rehabilitation plans and methodologies have been detailed in the Forward Program Report (FWP) submitted to the Resource Regulator.

## **5 ACTIONS REQUIRED FROM PREVIOUS ANNUAL REVIEW**

NSW planning after its review of the 2024 Annual Review that for future Annual Reviews, under the provisions of Schedule 2, Condition 4 of the approval, that they include a map that clearly shows the location of all biodiversity offset areas. This is addressed in Section 6.5.

## **6 ENVIRONMENTAL PERFORMANCE**

### **6.1 NOISE**

#### **6.1.1 Environmental Management**

During the reporting period, the noise mitigation strategies to minimise the effects of noise on the community have been continued as outlined below.

- Annual testing of maximum sound power levels;
- Stage 1 or 2 noise attenuation fitted on all trucks;
- Restricting hours of operation to daytime;
- Changing operation procedures.

below identifies the monitoring locations for both continuous and attended noise monitoring.

During the reporting period, several operational strategies remained in place to respond to potential noise impacts from mining operations including:

- Continuous noise monitoring;
- Attended noise monitoring;
- Noise control operators engaged;
- Sound filtering and interpretation to isolate the masking effects of extraneous noise sources from birds, insects, and other environmental noise sources during monitoring.
- Modification of operations, including shutting down plant items, to reduce offsite impacts.

Figure 2 below identifies the monitoring locations for both continuous and attended noise monitoring



Figure 2 - Site Noise Monitoring Locations

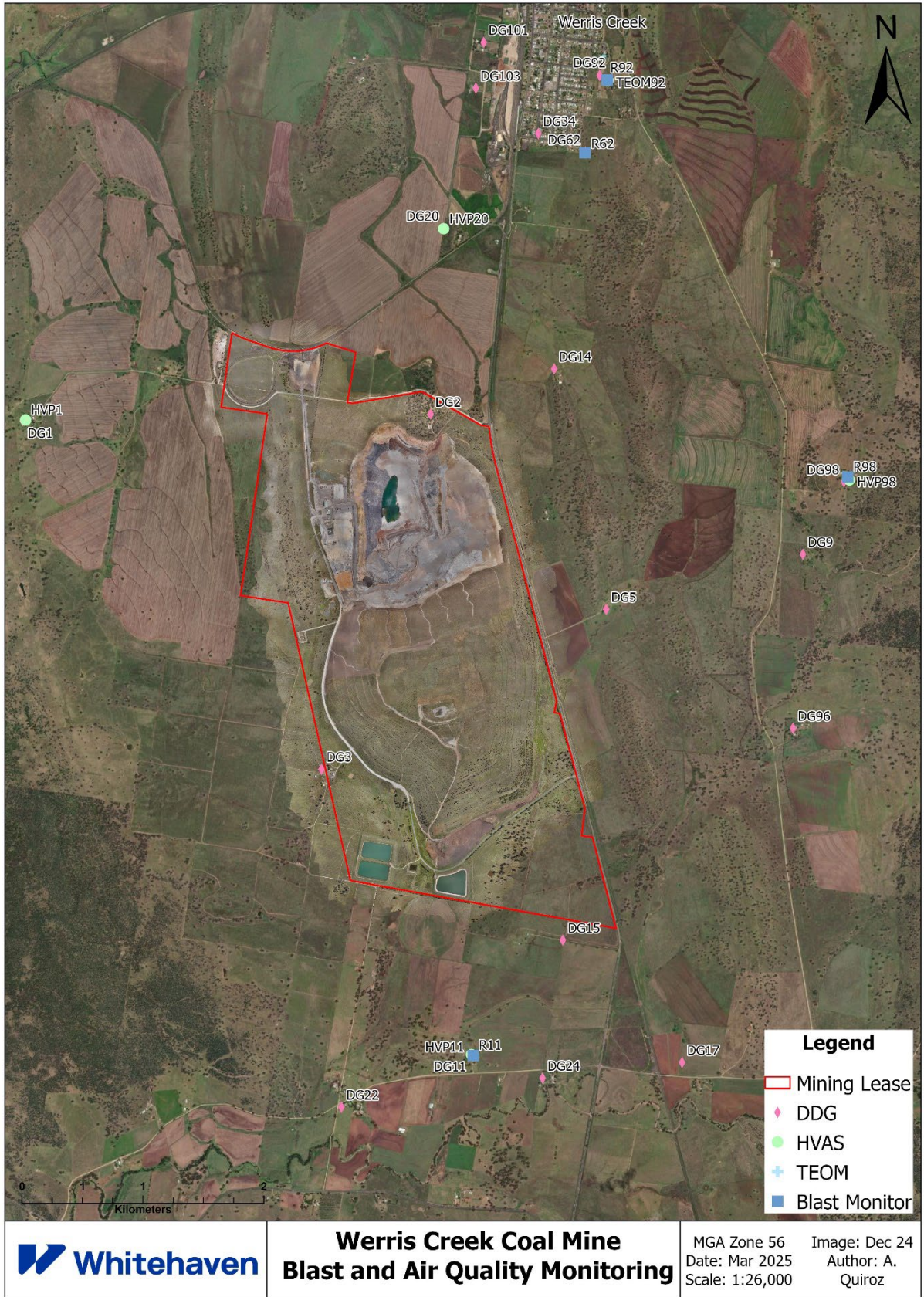


Figure 3 - Blast Monitoring Sites (inactive) and Air Quality Monitoring Network

### 6.1.2 Environmental Performance

#### Attended Monitoring

Attended monitoring is undertaken monthly by an independent consultant and is used to assess compliance with licence and approval limits for mine contributed noise. Attended noise monitoring identified no exceedances of the noise criteria during the reporting period (2025).

#### EA Predictions

**Table 7 – Measured WCC Noise Levels vs EA Predictions**

Measured WCC noise levels above NVIA Predictions (2025)			
	Day-time dB(A)LAeq,15min	Evening/night-time dB(A)LAeq,15min	Sleep Disturbance dB(A)LA1,1min
<b>G</b> Kyooma	--	--	5 <sup>1</sup>
<b>H</b> R97	--	--	5 <sup>1</sup>

1. Measured minus predicted level during October 2024

Based on attended noise monitoring conducted by Spectrum Acoustics, the historical noise data for WCC mine throughout 2018 to 2025, noise monitoring surveys consistently demonstrated trends in which measured noise levels from the site were well below the worst-case EA predictions, respectively, for each receiver location.

Review of monitoring results over the five-year period WCC noise levels remained below the noise criteria, showing trends of very limited variation in measured noise levels from WCC. Most levels were inaudible, fewer than 1% were above EA predictions and none exceeded the relevant noise criteria at any receiver for the reporting period.

### 6.1.3 Proposed Improvement Measures

No proposed improvements for the next reporting period as site production activity has ceased due to progressing into closure.

## 6.2 BLASTING

There was no blasting during the reporting period, and none forecast for the next reporting period as is progressing into closure.

## 6.3 AIR QUALITY

### 6.3.1 Environmental Management

The air quality criterion applicable to WCC is specified in Condition 16, Schedule 3 of PA10\_0059 MOD2 and is managed through the implementation of the Air Quality and Greenhouse Gas Management Plan (AQGHGMP). During the reporting period, various controls were maintained and continued to manage dust including:

- Use of water carts across the site during rehabilitation activities;
- Overburden and soil loading activities were not undertaken during periods of adverse weather (high winds or dry conditions), with SMS triggers employed to provide a near-real time operational response;
- All personnel are instructed that all vehicles must utilise existing tracks on-site and must be driven to the conditions to minimise trafficable dust generation;
- The extent of disturbed areas, including pre-strip clearing and rehabilitation, is confined to that which was necessary for mining activities, and all such areas are to be stabilised and revegetated at the earliest practicable opportunity once they are no longer required for operational purposes. Modification of operations, including shutting down plant items, to reduce offsite impacts; and
- Installed bird deterrents were maintained on depositional dust gauges to reduce contamination.

The above management measures will continue to be maintained throughout the next reporting period to continually improve air quality performance.

The WCC Air Quality Monitoring network is illustrated in Figure 3 and includes:

- Continuous monitoring of PM<sub>2.5</sub> and PM<sub>10</sub> levels at the Werris Creek TEOM;
- PM<sub>10</sub> levels are measured at four High Volume Air Samplers (HVAS) distributed across neighbouring properties surrounding WCC. The HVAS run for twenty-four hours every six days. Total Suspended Particulate Matter (TSP) is also measured at a separate HVAS unit located at Kyooma;
- A network of dust deposition gauges surrounding WCC, measuring deposited dust and particulates collected monthly.

### 6.3.2 Environmental Performance

#### TEOM

Monitoring conducted at the Werris Creek TEOM indicates the PM<sub>10</sub> annual average remained below the applicable criteria of 30 µg/m<sup>3</sup>. The 24-hour measurements of PM<sub>10</sub> also remained below the 24-hour average limit of 50 µg/m<sup>3</sup> with the exception of 27<sup>th</sup> May 2025 where a result of 60.6 µg/m<sup>3</sup> (possibly impacted by dust storms) was recorded.

Figure 4 below shows continuous results for PM<sub>10</sub> (24hr) and PM<sub>2.5</sub> (24hr) for the reporting period, as well as a running annual average throughout the reporting year.

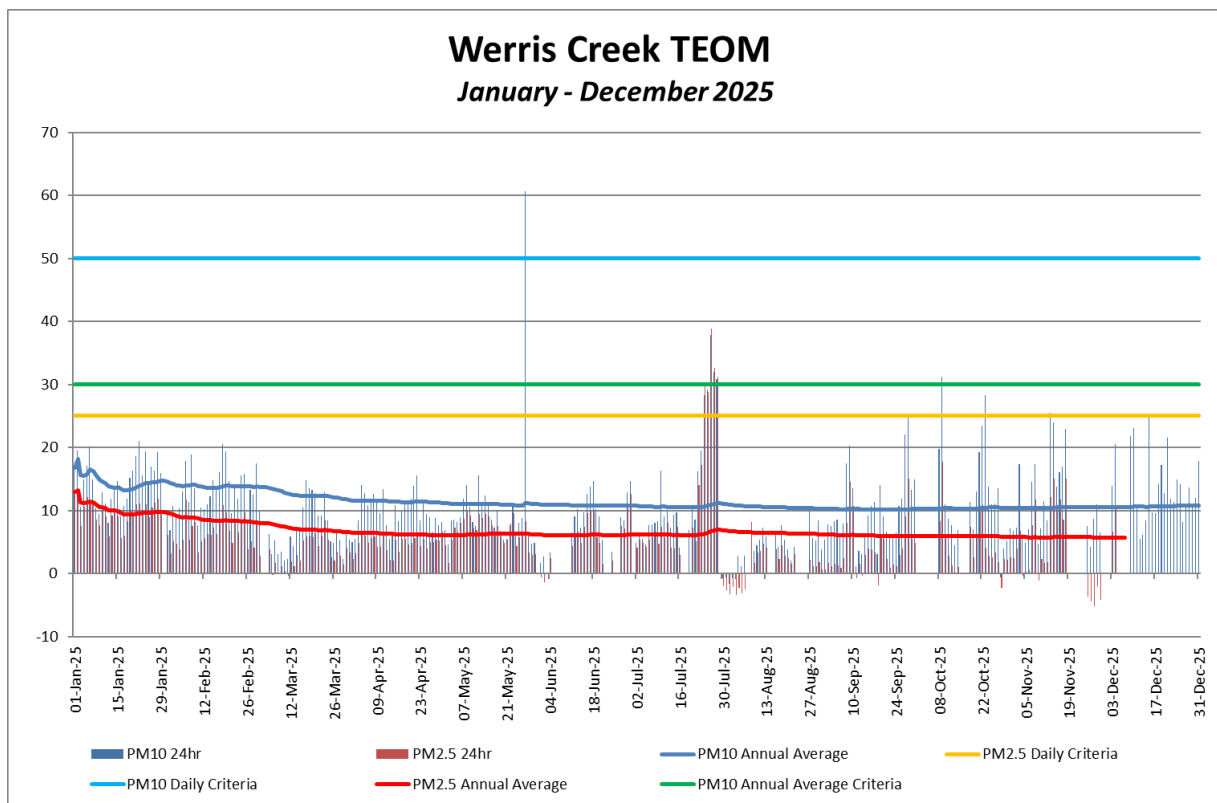
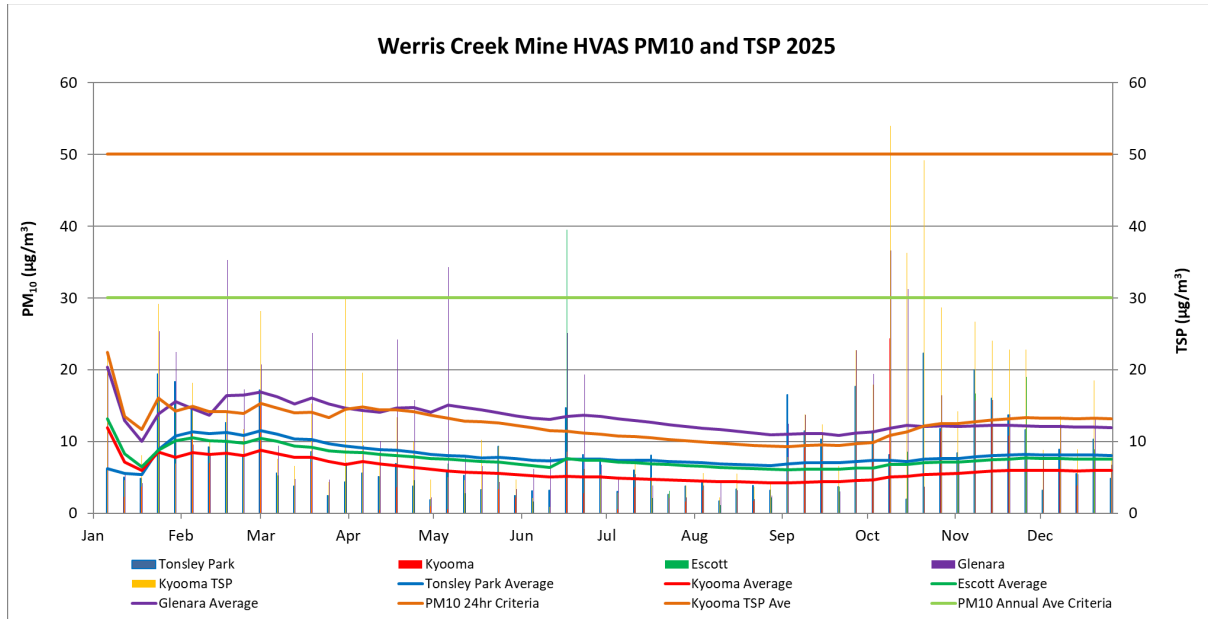


Figure 4 - Werris Creek TEOM summary for January – December 2025

**HVAS**

Monitoring conducted across the HVAS PM<sub>10</sub> network has shown the rolling annual average PM<sub>10</sub> concentrations to be below the criteria of 30 µg/m<sup>3</sup> at all monitoring stations across the network during the reporting period, see Figure 3 and Table 8.

All the 24-hour measurements of PM<sub>10</sub> remained below the daily criteria of 50 µg/m<sup>3</sup> as shown in Figure 5.



**Figure 5 - Werris Creek Mine HVAS PM10 and TSP results for January – December 2025**

A summary of current and historical HVAS and TEOM data is presented in Table 8.

**Table 8 - TEOM and HVAS Averages**

Location	2018	2019	2020	2021	2022	2023	2024	2025
	µg/m <sup>3</sup>							
10TEOM92 – Werris Creek	16.1	27.0	14.7	9.4	8.1	10.4	13.3	10.7
HVP20 – Tonsley Park	20.6	33.0	19.4	10.7	7.3	14.0	9.7	8.1
HVP98 – Kyooma	14.9	25.0	10.5	5.6	3.9	7.2	6.7	5.9
HVP1 – Escott	13.7	22.0	9.9	6.1	4.4	7.7	7.9	7.5
HVP11 – Glenara	23.4	32.3	14.5	8.9	8.4	12.6	13.6	11.9

**Deposited Dust**

Analysis of the reporting period showed the depositional dust results met compliance criteria. DG2 (Cintra) which is within the mining lease and on mine owned land within 200m of void edge recorded the highest maximum result of 6.0 g/m<sup>2</sup>/month. Across all monitoring sites, the

annual average was between 0.4 and 2.0 g/m<sup>2</sup>/month, which is similar to the 2024 averages of 0.3 to 1.9 g/m<sup>2</sup>/month.

A summary of deposited dust monitoring results is presented in Table 9 below.

**Table 9 – Deposited Dust Summary for 2025**

EPL# 12290	ID	Property	Annual Average	Average – Excluded*	Minimu m	Maximum	AQGHGMP Criteria	# Results Excluded
-	DG1	Escott^	0.4	0.4	0.0	0.9	4.0	0
-	DG2	Cintra^	1.5	1.5	0.3	6.0	4.0	0
-	DG3	Eurunderee^	0.8	0.8	0.3	1.9	4.0	0
-	DG5	Railway View^	1.7	1.1	0.3	2.0	4.0	2
-	DG9	Marengo^	0.6	0.6	0.0	1.8	4.0	0
#29	DG11	Glenara	0.8	0.8	0.3	2.8	4.0	0
-	DG14	Greenslopes^	1.7	1.2	0.1	3.3	4.0	1
-	DG15	Plain View^	0.5	0.5	0.2	1.5	4.0	0
-	DG17	Woodlands	1.9	1.3	0.3	3.6	4.0	1
-	DG20	Tonsley Park^	0.8	0.8	0.2	2.3	4.0	0
-	DG22	Mountain View	1.0	1.0	0.2	3.9	4.0	0
-	DG24	Hazeldene	1.9	1.7	0.4	3.0	4.0	1
-	DG34	8 Kurrara Street	0.6	0.6	0.2	1.4	4.0	0
-	DG62	Werris Creek South	0.4	0.4	0.1	1.3	4.0	0
#30	DG92	Werris Creek Centre	0.7	0.7	0.2	1.8	4.0	0
#28	DG98	Kyooma	0.4	0.4	0.1	1.2	4.0	0
-	DG101	Westfall	1.3	1.3	0.4	5.1	4.0	0
-	DG103	West Street	2.0	2.0	1.0	3.6	4.0	0

^ Properties owned by Werris Creek Coal;

^\* Properties owned by Werris Creek Coal; and within the mining lease

\*Averages do not include contaminated results (samples deemed contaminated with organic matter from non-mining source (i.e. bird droppings and insects)

**EA Predictions**

The DDG annual averages have been compared to the EA predictions (Figure 6) The EA predictions have been made via scenarios whereby scenario two is year 7 of mining production and scenario three is year 15 of mining production. Werris Creek Coal mine is no longer operating since 2024 which was year 15 of mining production since the predictions were made (Heggies 2010).

As seen in Figure 6 below the 2025 results for the Deposited Dust Gauges (DDG) have displayed an overall decrease on some predictions made in the EA (Heggies 2010).

DG17 showed an increase of 1.2 g/m<sup>2</sup>/month and DG24 an increase of 1.3 g/m<sup>2</sup>/month, which aligns with expectations given the intensive cropping occurring in the paddocks where the monitoring station are located. On the other hand, DG15, situated between the mine and DG17, showed a slight decrease of -0.3 g/m<sup>2</sup>/month compared to predictions. Overall, this

indicates that the EA predictions are largely accurate, and the average DDG results for the site are showing improvement compared to the EA forecast.

It can be shown that PM<sub>10</sub> and TSP were significantly under the EA predictions in both Scenario 2 and 3 (Figure 6)

Dust Deposition g/m <sup>2</sup> /month									
SCENARIO 2 (Year 7)	AQ Assessment* Receptor ID	2025 Annual Average	SCENARIO 2 (Year 7) PREDICTION	Variance	SCENARIO 3 (YEAR 15)	AQ Assessment* Receptor ID	2025 Annual Average	SCENARIO 2 (Year 15) PREDICTION	Variance
DG11 "Glenara"	11	0.8	0.7	0.1	DG11 "Glenara"	11	0.8	0.7	0.1
DG14 "Greenslopes"	14	1.7	1.1	0.6	DG14 "Greenslopes"	14	1.7	1.3	0.4
DG15 "Plain View"	15	0.5	0.9	-0.4	DG15 "Plain View"	15	0.5	0.8	-0.3
DG17 "Woodlands"	17	1.9	0.7	1.2	DG17 "Woodlands"	17	1.9	0.7	1.2
DG20 "Tonsely Park"	20	0.8	1.2	-0.4	DG20 "Tonsely Park"	20	0.8	1.1	-0.3
DG22 "Mountain View"	9	1	0.7	0.3	DG22 "Mountain View"	9	1	0.6	0.4
DG24 "Hazeldene"	24	1.9	0.7	1.2	DG24 "Hazeldene"	24	1.9	0.6	1.3
DG98 "Kyooma"	98	0.4	0.7	-0.3	DG98 "Kyooma"	98	0.4	0.7	-0.3

PM <sub>10</sub> (HVAS) µg/m <sup>3</sup>									
SCENARIO 2 (Year 7)	AQ Assessment* Receptor ID	2025 Annual Average	SCENARIO 2 (Year 7) PREDICTION	Variance	SCENARIO 3 (YEAR 15)	AQ Assessment* Receptor ID	2025 Annual Average	SCENARIO 2 (Year 15) PREDICTION	Variance
HVP11 "Glenara"	11	11.9	16.3	-4.4	HVP11 "Glenara"	11	11.9	15.9	-4
HVP20 "Tonsley Park"	20	8.1	20	-11.9	HVP20 "Tonsley Park"	20	8.1	19.9	-11.8
HVP98 "Kyooma"	98	5.9	16	-10.1	HVP98 "Kyooma"	98	5.9	15.9	-10

TSP (HVAS) µg/m <sup>3</sup>									
SCENARIO 2 (Year 7)	AQ Assessment* Receptor ID	2025 Annual Average	SCENARIO 2 (Year 7) PREDICTION	Variance	SCENARIO 3 (YEAR 15)	AQ Assessment* Receptor ID	2025 Annual Average	SCENARIO 2 (Year 15) PREDICTION	Variance
HVT98 "Kyooma"	98	13.2	32.6	-19.4	HVT98 "Kyooma"	98	13.2	32.2	-19

Figure 6 - Air Quality Data vs EA Predictions

\*Air Quality Assessment for Werris Creek Coal Mine Life of Mine Project (Heggies Pty Ltd, December 2010)

**NOTES:**

- > **DUST DEPOSITION** - Across all receptors, there was an overall annual average increase of 0.2 g/m<sup>2</sup>/month above the Predicted level for both Year 7 and Year 15
- > **PM<sub>10</sub>** - Across all receptors, there was an overall annual average decrease of 4.7 µg/m<sup>3</sup> below Predicted level in Year 7 and 4.5 µg/m<sup>3</sup> in Year 15
- > **TSP** - At designated receptor there was an annual average decrease of 18.3 µg/m<sup>3</sup> below Predicted level for Year 7 and 17.9 µg/m<sup>3</sup> in Year 15

## **6.4 GREENHOUSE GAS**

### **6.4.1 Environmental Management**

Greenhouse Gas (GHG) emissions at the Werris Creek Mine are managed in accordance with Schedule 3 Conditions 15 of PA 10\_0059 and the AQGHGMP. The main sources of GHG emissions considered in the AQGHGMP are:

- Consumption of diesel fuel – Scope 1;
- Release of fugitive emissions from the fracturing of coal seams – Scope 1; and
- Consumption of electricity – Scope 2.

### **6.4.2 Environmental Performance**

GHG emissions are reported through participation in the National Pollutant Inventory (NPI) and as part of the Whitehaven Group in the National Greenhouse and Energy Reporting Scheme (NGERS). The total of Scope 1 and Scope 2 GHG emissions attributed to WCC reported for the NGERS FY2025 reporting year were 6,906 CO<sub>2</sub>-e. This represents a 70% reduction compared to the previous reporting period, reflecting the shift in site operations from active production to rehabilitation. The significant decrease is consistent with the reduced operational emissions expected as mining activities have ceased and the focus is now on rehabilitating the site.

There are no directly comparable EA predictions for greenhouse gas emissions from rehabilitation activities at the site; therefore, WCC has not performed a comparison for FY2025. The EA GHG predictions are based on a site production of 1.5 Mt ROM coal, whereas no ROM was produced at WCC in FY2025.

#### **Scope 1 emissions**

Scope 1 greenhouse gas emissions for the FY2025 NGERS reporting period were 6,694 t CO<sub>2</sub>-e. This is a 70% reduction compared to the previous reporting period.

#### **Scope 2 emissions**

Approximately 321,824 kWh electricity was purchased by the mine during the FY2025 reporting period equating to 212 t CO<sub>2</sub>-e GHG emissions. This is less than the previous reporting period. Since late 2022, WHC NSW operations including WCC have offset Scope 2 emissions by purchasing carbon neutral electricity.

## **6.5 BIODIVERSITY**

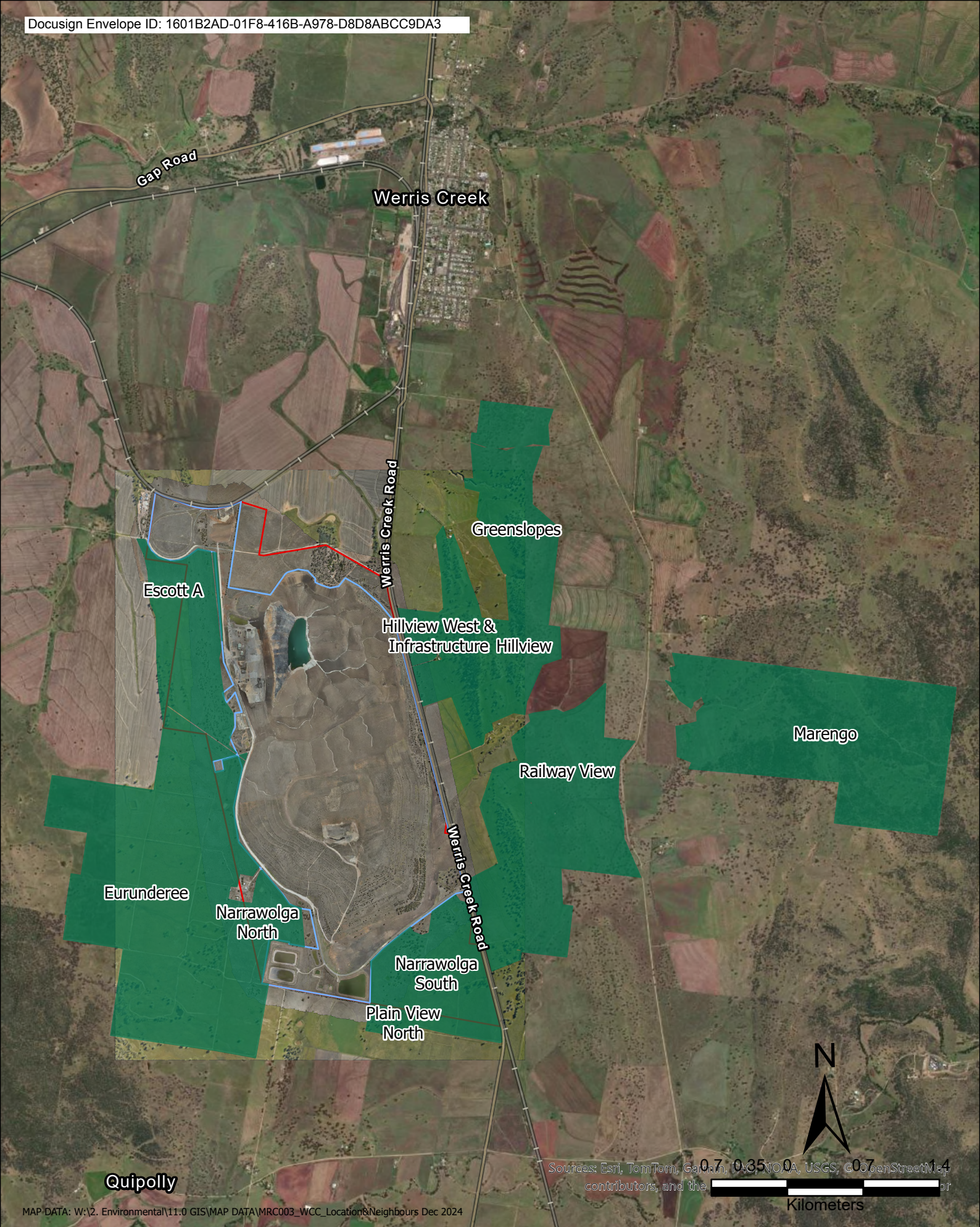
### **6.5.1 Environmental Management**

Biodiversity was managed in accordance with:

- Schedule 3 Conditions 28 of the PA 10\_0059;
- EPBC 2010 / 5571 Condition 1; and
- The WCC Biodiversity Offset Management Plan (BOMP).

### **6.5.2 Environmental Performance**

The Werris Creek Coal Mine (WCCM) Biodiversity Offset Management Plan (BOMP) was approved by the former NSW Department of Planning and Environment (DPE now Department of Planning, Housing and Infrastructure DPHI) on 30 August 2013 and WCCM Offset Management Plan was approved by the former Commonwealth Department of Environment and Energy (DoEE now Department of Climate Change, the Environment, Energy and Water DCCEEW) on 4 July 2017. The WCCM Biodiversity Offset Strategy (BOS) is required to offset 1317ha of native woodland to achieve a 'like for like or better' biodiversity outcome across offset areas combined from 6 Offset Areas (Figure 7) (part of Eurunderee, Narrawolga, Railway View, Hillview, Greenslopes and Marengo properties) adjacent to the WCCM for the purpose of restoring vegetated corridors across WCC land holdings and Quipolly Creek Catchment linking with sub-regional habitat corridors. Another 3 Compensatory Revegetation Areas (part of Escott A, Plainview North and Hillview West properties) are approved by PA 10\_0059 MOD 5. Collectively, these areas are referred to as the WCCM Biodiversity Managed Area (BMA) which have a total area of 1400.73ha.



Datum MGA2020 Zone 56 Author A. Quiroz

Image Feb-26 Date Marc-26 Size/Scale 1:43,000 (A4)

# Werris Creek

## Biodiversity Offset Properties Location

- Legend
- WCC Biodiversity Offset Properties
  - Operational Boundary
  - ML Boundary

### **Offset Security Management**

The 6 BMAs that form the WCCM Offsets Areas have previously been secured using NSW Conveyancing Act 1919 Section 88E Instruments which were registered on 20 July 2018 and 2 August 2018 finalising compliance with PA 10\_0059 Schedule 3 Condition 27 and EPBC Act Approval 2010/5571 Condition 1 and therefore achieving securement of the WCCM BOS. WHC has continued consultation with DPHI for reviewing the type of securement for these WCCM Offsets Areas.

### **Weather Summary of WCCM BMA**

Regionally central meteorological station to the BMA is the Gunnedah Airport site (BOM 2025) which has recorded highly variable rainfall from the driest on record of 233mm in 2019; followed by above average rainfall years in 2020, 2021 and 2022 of 844mm, 990mm and 860mm respectively (resulting in a numerous of major flooding events of the Namoi River). Subsequently 2023 and 2024, the Gunnedah Airport site (BOM 2025) recorded 496mm and 572mm which are closer to the annual average rainfall of 572mm. Flooding of the Namoi River was experienced again in August 2025 with a return to above average annual rainfall for 2025 of 755mm. WHC maintains a meteorological station within the WCCM BMA with a summary of weather conditions experienced at the Narrawolga during the 2025 reporting period being maximum monthly average temperature was 32°C in January 2025. Minimum monthly average temperature was 2°C in June 2025. Annual temperature ranges were -4°C to 38°C in 2025. The total annual rainfall in 2025 was 636mm with the maximum in March (125mm) and minimum in June (18mm).

### **Infrastructure Management**

During the reporting period, a total of 945m of fencing maintenance was carried out on the Eurunderee, Railway View and Greenslopes BMA, as well as maintenance of signage and gates undertaken as required on the WCCM BMAs to continue to restrict unauthorised access and minimise livestock incursion. Any remaining derelict assets/infrastructure items will continue to be assessed, removed and remediated as required.

### **Seed Management**

The routine seed assessments on the WCCM BMA aims to identify on a seasonal basis the life cycle stage and development of native plants to identify what, where, when and how to target appropriate resources to collect seed for future revegetation programs. A total of 2 species were collected resulting in 1.2kg of local providence seed from the WCCM BMAs that

was incorporated with other local and regionally provenance seed sourced by reputable seed collectors as part of the WHC group wide revegetation planning.

### **Revegetation Management**

The WCCM BOS revegetation strategy focuses on restoration and revegetation of cleared non-native grassland (former cultivation) and derived native grasslands and assisting natural regeneration in better quality woodland areas. During the reporting period, no specific revegetation works were undertaken. Future revegetation programs undertaken will undertake maintenance towards the target Woodland PCT vegetation composition, structure and function.

### **Heritage Management**

During the reporting period, annual heritage inspections were completed on the 3 known heritage sites (2 Aboriginal archaeological and 1 historical) across the WCCM BMA. Heritage sites are maintained with 155m of demarcation fencing around the heritage site perimeter and signage to mitigate access and inadvertent disturbance. During the reporting period there were no new heritage sites identified.

### **Habitat Management**

During the reporting period, no specific habitat management works were undertaken on the WCCM BMAs. There has been a total of 90 nest boxes installed since 2021.

### **Weed Management**

WHC coordinated routine weed monitoring and inspections being undertaken across WCCM BMA in March, August and November/December 2025. The priority weeds identified included legacy weeds inherited from previous owner's management regimes such as African Boxthorn, African Lovegrass, Bathurst Burr, Blue Heliotrope, Buffel Grass, Coolatai Grass, Cotoneaster, Fireweed, Johnson Grass, Noogoora Burr, Paterson's Curse, Prickly Pear and St John's. The weed monitoring/inspections ensure that timely and prioritised weed control is undertaken on a seasonal basis with the information directly given to spraying contractors to identify what, where, when and how to target appropriate resources across the WCCM BMA for weed control. During the reporting period, WHC implemented a weed control program including 662ha treated across the Eurunderee, Narrawolga, Railway View, Hillview, Greenslopes and Marengo BMA between January and December 2025 targeting Johnson Grass, African Boxthorn, Prickly Pear, St John's Wort and other broadleaf weeds within revegetation areas and along tracks. Only appropriately qualified and experienced weed

contractors (AQF3 accreditation or higher for use of herbicide) were engaged to undertake weed control works for WHC.

### **Pest Animals Management**

WHC aims to apply an even and consistent pest animal management effort by routinely scheduling rolling monitoring and control programs across WCCM BMAs. This standardised approach can also be supplemented with periodic targeted programs that focus on specific areas with high pest animal detection, or, on species which have increasing rates of detection. Both the overall management and targeted programs are planned to use data collected from grid-based motion detection camera monitoring program, pest animal observations and the results of previous control programs. Monitoring demonstrated that certain animals like Eastern Grey Kangaroos were highly detectable and Feral Pigs moderately detectable across the year with Foxes locally or seasonally moderately detectable on specific BMAs. All other pest animal species had a scarce to low detectability across 2025. The pest animal monitoring ensures that timely and prioritised pest animal control is undertaken on a seasonal basis identifying what, where, when and how to target appropriate resources across the WCCM BMA for pest animal management. During the reporting period, WHC implemented a pest animal control program across the WCCM BMA with 40 canid pest ejectors triggered from 155 deployed and 435 Hoggone baits consumed from 1220 presented across the WCCM BMA. Additionally, 41 Feral pigs were trapped and removed from the WCCM BMAs. Open range shooting programs were also implemented in conjunction with the other pest animal programs resulting in an additional 35 Feral Pigs, 3 Foxes and 4 Deer being controlled in 2025. Only appropriately qualified and experienced feral animal contractors (appropriate feral animal management qualifications, NSW firearm licence and pesticide accreditation where relevant) were engaged to undertake feral animal control works for WHC.

### **Soil & Erosion Management**

Annual inspections were undertaken including unsealed access tracks and associated drainage structures across the WCCM BMA to review appropriate erosion and sediment control measures required in accordance with the Blue Book (Managing Urban Stormwater: Soils and Construction Volume 1 (Landcom 2004)). A total of 14 observations were recorded across the WCCM BMA with no locations requiring targeted additional track maintenance to mitigate further erosion and sedimentation. The remaining tracks/drainage structures are maintained during routine WHC Biodiversity access track maintenance program. There are also a number of legacy erosion sites inherited from previous owners' management regimes that are subject to a separate annual inspection process and updates to the WHC erosion

register made. During the reporting period, monitoring and investigations commensurate to the risk was undertaken at the 2 erosion sites remaining within WCCM BMA following the Marengo erosion site being successfully rehabilitated in 2024.

### **Grazing Management**

The original WCCM BMA have been destocked since 2012 and continued to be destocked with no strategic grazing occurring during the reporting period and the Compensatory Revegetation BMAs destocked in 2023. There were 4 instances of stock incursion during the reporting period; with stock on each occasion retrieved and fencing repaired as required.

### **Bushfire Management**

The Werris BMA annual fuel load monitoring was undertaken between September and December 2025 as part of planning and assessment of bushfire hazard and ecological burn program for 2026; with the results indicating moderate to high overall and grassland fuel loads present. During the reporting period, no bushfires occurred, and no ecological burns were undertaken. Other fire management implemented by WHC during the reporting period was maintenance carried out as required on 79.6km of fire trails to a zero-fuel barrier standard on the WCCM BMA. WHC maintains regular communications throughout the reporting period with the Liverpool Range Zone RFS team around planning of ecological burn programs as well as maintaining contact points in case of emergency. WHC maintains a specialist firefighting contractor for an on call engagement during the fire season to respond in the event of a bushfire on WHC BMAs and non-mining lands.

### **Threatened Flora Management**

During the reporting period, threatened flora inspections were completed on the 5 known threatened flora sites for *Digitaria porrecta* within the WCCM BMA. Each site is maintained with a total of 3.7km of demarcation fencing around all site perimeters and signage to mitigate access and inadvertent disturbance.

In accordance with the Werris Creek BOMP 2013/2016, 320 *Digitaria porrecta* were propagated from seed collected in 2024 and translocated to the Narrawolga biodiversity property in November 2024. A survival rate of 83.4% of translocated individuals was recorded in December 2025 such that this translocation program indicate that seed propagation can be viable translocation method for *Digitaria porrecta*

## Monitoring Program

The 2025 ecological monitoring program of the Werris BOA included winter bird surveys that were undertaken in July and August 2025; fauna surveys involved 22 bird survey sites, 14 microbat echolocation sites, 8 pitfall trapping survey sites, 19 active forage sites, 6 motion detection camera sites completed between January 2025 and December 2025 and the annual spring flora monitoring of 25 plots across four vegetation zones (VZs) undertaken in October 2025.

During the winter bird surveys, two threatened species (Dusky Woodswallow and Speckled Warbler) were recorded. Monitoring results from diurnal bird surveys recorded an overall total of 60 bird species at 22 bird survey sites compared to 86 species in 2024. For remnant woodland sites; diurnal bird surveys recorded 51 bird species at 8 sites (average 15.75, range 11-19). For naturally regenerating sites; diurnal bird surveys recorded 24 species from 7 sites (average 7.57, range 5 - 13). For revegetation/rehabilitation sites; diurnal bird surveys recorded 22 species from 7 sites (average 4.63, range 1-12). Monitoring results from microbat surveys recorded an overall 16 species (positively identified from echolocation recordings) across 14 echolocation sites including 5 species listed as threatened under the BC Act. Species richness from microbat surveys recorded 15 species at remnant woodland sites (average 10.5, range 8-14), 15 species in naturally regenerating sites (average 10.33, range 5-14) and 11 species in revegetated sites (average 3, range 0-12). Monitoring results from pitfall trap surveys recorded an overall 26 species of vertebrate fauna were captured or detected during the pitfall trap and active forage program including 20 reptile species, 5 amphibian species and one native mammal with species richness values ranged between 2-10 per site. Species richness from pitfall trap and active forage surveys recorded 17 species in remnant woodland sites (average 6.7, range 5-8), 4 species in naturally regenerating sites (average 2.5, range 2-3) and 6 species in revegetation sites (average 2.67, range 1-4). A total of 9 species of native animal and 8 introduced species were detected on motion detection cameras.

During flora monitoring, two VZ's (VZ 29 and 31) was recorded as meeting or exceeding completion criteria for all four biometrics. Native plant species richness (NPS) completion criteria (benchmark for relevant biometric vegetation communities) was met or exceeded at 2 out of 4 VZs. Native overstorey cover (NOS) completion criteria (minimum benchmark for relevant biometric vegetation communities) was met or exceeded at 3 out of 4 VZs. Native midstorey cover (NMS) completion criteria (minimum benchmark for relevant biometric vegetation communities) was met or exceeded at all four VZs. Native ground cover grass

(NGCG) completion criteria (minimum benchmark for relevant biometric vegetation communities) was met or exceeded at all four VZs. Comparison of individual plot data shows that NPS increased from 12 out of 25 plots meeting or exceeding completion criteria in 2024, to 13 out of 25 plots in 2025. Native overstorey cover (NOS) increased from 16 out of 25 plots meeting or exceeding completion criteria in 2024, to 18 out of 25 plots in 2025. Native midstorey cover (NMS) increased from 21 out of 25 plots meeting or exceeding the completion criteria in 2024 to 22 out of 25 plots in 2025. Native ground cover grass (NGCG) slightly decreased from all 25 plots meeting or exceeding the completion criteria in 2024 to 24 out of 25 plots in 2025.

### **6.5.3 Environmental Management**

The LOM Environmental Assessment determined that the project would not result in any future adverse impacts on Aboriginal cultural heritage. The impact associated with the removal of the remnant features of the former Werris Creek Colliery is considered to be minor, as the historic sites do not meet the NSW Heritage Office (2001) criteria for high significance sites (even at a local level) (Landskape, 2010). WCC previously undertook quarterly inspections of the only known significant Aboriginal heritage item onsite – the “Narrawolga” Axe Grinding Grooves prior to their relocation in consultation with stakeholders, to the Willow Tree Visitor Information Centre in 2015.

The Heritage Management Plan outlines additional heritage management actions related to items associated with the former underground and these have been completed. The mining of the former underground workings was finalised during the first half of 2020. No items of heritage significance were located.

### **6.5.4 Environmental Performance**

There was no additional disturbance during 2025, and no previously unknown sites or artefacts were discovered during the period. This is consistent with the EA Predictive model and the Cultural Heritage Assessment undertaken by Landskape (2010).

#### **EA Predictive Model**

Based on the regional archaeological record, the high level of disturbance on the Project Site and the general setting of the Project Site, Landskape (2010) proposed the predictive model of Aboriginal cultural heritage site locations on the Project Site summarised in Table 10

**Table 10 – Heritage EA Predictions**

EA Prediction	2024 Performance
<p>Trees scarred or carved by Aboriginal people may occur wherever mature Eucalypt and Cypress Pine trees grow. However, given the extent of vegetation clearance the probability of encountering culturally modified trees is not particularly high.</p>	<p>No previously unknown Scarred Trees were observed in the reporting period.</p> <p>This is consistent with the EA predictions.</p>
<p>Stone artefact scatters and isolated finds of stone artefacts are possible over the entire Project Site, but their density is likely to be low due to the absence of creeks and wetlands on or immediately surrounding the Project Site.</p>	<p>No previously unknown Stone Artefacts were observed in the reporting period.</p> <p>This is consistent with the EA predictions.</p>
<p>Burial sites are unlikely, given that the region's acidic soils are not suited to preserving bone and other organic material.</p>	<p>No previously unknown burial sites were observed in the reporting period.</p> <p>This is consistent with the EA predictions.</p>
<p>Freshwater shell middens will not occur because they are rarely found more than 100m from permanent water sources.</p>	<p>No Freshwater Shell Middens were observed in the reporting period.</p> <p>This is consistent with the EA predictions.</p>
<p>Earthen features including mounds, ovens and hearths, stone arrangements and ceremonial rings are unlikely to be encountered because previous land disturbance such as earthworks associated with past and recent quarrying and mining activities, grading roads and fence lines, and ploughed cultivation during agricultural cropping is likely to have destroyed earthen and stone features (had these site types originally occurred within the Project Site).</p>	<p>No previously unknown mounds, ovens, hearths, stone arrangements or ceremonial rings were observed in the reporting period.</p> <p>This is consistent with the EA predictions.</p>
<p>Some sites dependent upon the presence of rock formations such as rock shelters and rock art sites are also improbable because the</p>	<p>No previously unknown rock formations or rock shelters were observed in the reporting period.</p> <p>This is consistent with the EA predictions.</p>

EA Prediction	2024 Performance
<p>sedimentary bedrock in the low hills and ridges of the Project Site does not contain caves or overhangs. The Project Site is not suited to quarrying, although Aboriginal people may have collected pebbles and cobbles from colluvial and alluvial deposits for stone artefact knapping.</p>	
<p>Axe-grinding grooves may occur on sandstone surfaces, and as such outcrops in the Project Site were targeted for particular attention during the survey.</p>	<p>No previously unknown Axe-grinding Grooves were observed in the reporting period.  This is consistent with the EA predictions.</p>
<p>Any historical heritage sites in the Project Site were anticipated to most likely relate to early pastoral activities of the last half of the nineteenth century or the first half of the twentieth century and coal mining activities associated with the former Werris Creek Colliery (of 1920s to 1960s). Site types that have the potential to occur include ruins of mine structures, discarded mining and farming machinery and blazed survey marks.</p>	<p>No previously unknown European artefacts or items of interest were observed in the reporting period.  This is consistent with the EA predictions.</p>

## 6.6 WASTE

### 6.6.1 Environmental Management

WCC continued to engage a total waste management service provider during 2025. This practice has ensured WCC is positioned to maintain regulatory compliance regarding offsite disposal at licenced facilities and on-site storage requirements.

### 6.6.2 Environmental Performance

The engaged waste management service provider records waste generation quantities at the point of either disposal or collection. The quantities of each generated waste type have been summarised in Table 11 for the 2025 period. The current reporting period demonstrates benefits in total levels of resource recovery seen from improvements to waste management practices at WCC originally implemented in late 2014. These improvements have led to reduction in general waste volumes, while seeing regular recycling / resource recovery overall 2025 saw improvements in waste tracking via increased accuracy in recording of waste quantities being generated and disposed from site. These waste tracking improvements provide for an enhanced degree of measurability of the success for all resource recovery initiatives undertaken going forward.

**Table 11 – Approximate Quantities of Waste Generated in 2025 vs EA Predictions**

Waste Stream	2021	2022	2023	2024	2025	EA Estimate/ Predictions	Discrepancy
Waste Oil (kL)	212.5	178.9	152.6	65.6	46.2	130	-34.4
Scrap Metal (tons)	46.0	52.8	24.6	28.1	17.6	#	+3.5 <sup>^</sup>
General Waste (tons)	138.53	88.17	91.65	70.82	6.9	800m <sup>3</sup>	#
Co-Mingled Recycling (tons)	6.74	7.73	2.8	0	1.45	#	-2.8 <sup>^</sup>
Timber (tons)	12.6	8.0	8.0	0	0	#	-8.0 <sup>^</sup>
Liquid Waste – J120 / Septic (L)	54,100	15,500	77,400	78,600	0	10,000 <sup>#</sup>	n/a
Empty IBCs (tons)	0.9	1.0	1.0	1.15	0	#	+0.15 <sup>^</sup>
Hydraulic Hoses + Filters (tons)	12.3	12.2	7.6	2.8	1.37	#	-4.8 <sup>^</sup>
Batteries (tons)	2.2	3.1	3.6	0	0	#	-3.6 <sup>^</sup>
Tyres (each)	56	52	54	16	0	73	19 <sup>§</sup>

\* Previously recorded / reported as cubic meters (m3) only.

<sup>^</sup>Discrepancies calculated from previous year instead of EA Prediction.

<sup>@</sup>Estimate of Septic only not including J120 waste

<sup>#</sup> No estimate/prediction for this waste stream. (Note: all waste streams are removed by a licenced contractor and majority recycled)

<sup>§</sup> 223 tyres were disposed of in-pit in accordance with WCC's EPL in 2024 (150 tyres on 13/03/2024 & 73 tyres on 17/06/2024). Majority of these tyres were stockpiled from previous years.

**EA Prediction**

Table 11 documents the variation between 2025 and the EA predicted waste volumes and the reported waste for 2025.

As seen in Table 11 some waste streams produced by Werris Creek are not covered in the EA predictions. This shows that WCC is segregating waste effectively and recycling material to individual waste types resulting in reduced overall waste disposed of.

**6.7 ENVIRONMENTAL PERFORMANCE SUMMARY**

An environmental performance summary is presented in Table 12 below.

**Table 12 – Environmental Performance**

Aspect	Approval Criteria / EIS Prediction	Performance during the reporting period	Trend / Key Management Implications	Implemented / proposed management actions
Noise	Refer s6.1	Approval criteria has been met	NA	NA
Air Quality	Refer s6.3	Approval criteria has been met	NA	NA
Biodiversity	Refer s6.4	Approval criteria has been met	NA	NA
Heritage	Refer s6.5	Approval criteria has been met	NA	NA

## 7 WATER MANAGEMENT

### 7.1 WATER TAKE

WCC currently holds two Water Access Licences, with the water taken under these licences for the 2025 reporting year summarised in Table 13. Inflow into the void includes groundwater inflow and spoil aquifer seepage.

**Table 13 - Water Take 2025 January - December (ML)**

Water Licence #	Water Sharing Plan	Water Source and Management Zone	Entitlement	Passive Take / Inflows	Active Pumping by WCC	Total
WAL 32224	NSW Murray Darling Basin Porous Rock Groundwater Sources	Gunnedah – Oxley Basin Mdb Groundwater Source	211	49	0	49
WAL 29506	NSW Murray Darling Basin Porous Rock Groundwater Sources	Gunnedah – Oxley Basin Mdb Groundwater Source	50	0	0	0

### 7.2 SURFACE WATER MANAGEMENT

#### 7.2.1 Environmental Management

The management of surface water aims to prevent surface water pollution both within onsite dams and offsite watercourses. The overall water management strategy is to segregate different water streams onsite based on the potential pollutant in each stream.

Void Water – the void water catchment area is comprised of the active mining area and overburden emplacement which collects both rainfall runoff and groundwater in the base of the open cut void and needs to be dewatered by pumping to the surface to allow mining of the basal coal seam;

Dirty Water – the dirty water catchment area is comprised of areas previously disturbed by mining such as rehabilitation and soil stockpile areas, with the focus on the reduction of suspended solids and subsequent discharge of treated water;

Clean Water – the clean water catchment area is undisturbed by mining activities and allowed to flow offsite without active management; and

Contaminated Water – includes potentially hydrocarbon contaminated water runoff from the workshop and fuel farm areas which is treated through an oil-water separator, as well as water from ablutions which is treated through a septic system onsite.

### **Void Water Management**

Void Water is stored in one of five designated void water dams (VWDs) comprising the void water management system at WCC. VWDs 1, 3, and 4, are long term water storage structures, while VWD 8 is a temporary structure, designed for the transfer of void water for use around the project or short term out of pit storage of out of surplus void water. VWD2 was decommissioned during 2023 as part of rehabilitation of the overburden dump. No annual inspection was undertaken of the prescribed dams (VWDs 1, 3 and 4) as it was deregistered in 2025. The annual inspection identified that all prescribed dams were being managed appropriately.

Void water is predominantly used for dust suppression purposes on site. Water carts engaged in watering haul roads and other areas of the mining excavation are the predominant user of water for dust suppression purposes, with water also used to control dust at conveyor loading points and on coal stockpiles, crushing and loading facilities. Void water use is monitored and calculated monthly using water meters on key pipelines and water fill points, supplemented by surveyed volumes of water stored in dams and the void on site. This data is used to update the Water Balance Model for site.

### **Dirty Water Management and Erosion and Sediment Control Measures**

During the period, dirty water dams remained in place to capture surface runoff from disturbed areas of the mine site.

Regular checks of the dirty water management system were undertaken as required dependent on rainfall volume.

### **Contaminated Water Management**

WCC undertook regular maintenance of the key contaminated water infrastructure during the reporting period, with the servicing of both the workshop sump and the oil water separator occurring as required throughout the reporting period. Waste from these facilities is transported either offsite (liquid waste to licensed waste facility) or to the onsite bioremediation area (solids) for treatment / disposal of residual hydrocarbons within the material.

## **7.2.2 Environmental Performance**

### **Surface Water Quality – Routine Quarterly Monitoring**

Quarterly sampling of water stored within the clean, dirty and void water dams, and within Quipolly and Werris Creeks, was undertaken by WCC.

Table 14 presents the average results recorded for routine quarterly monitoring at each location for the 2025 reporting period.

**Table 14 – Quarterly Surface Water Quality for Dams and Offsite Creeks**

Dam/ Creek	Monitoring Site (EPA No)	Number of Samples	Value	pH	Electrical Conductivity (µS/cm)	Total Suspended Solids (mg/L)	Oil & Grease (mg/L)
VWD1	16	4	Ave	8.1	1615	34	<5
			Max	8.2	2000	58	<5
VWD2	27	Decommissioned November 2024					
VWD3	-	4	Ave	8.1	1845	19	<5
			Max	8.2	1980	28	<5
VWD4	-	4	Ave	8.1	2083	10	<5
			Max	8.6	2270	10	<5
SB2	10	2*	Ave	7.8	373	20	<5
			Max	7.9	420	21	<5
SB9	12	1*	Ave	7.3	185	18	<5
			Max	7.3	185	18	<5
SB10	14	3*	Ave	7.3	103	84	<5
			Max	7.4	112	153	9
SB18	32	0*	Ave	Dry	Dry	Dry	Dry
			Max	Dry	Dry	Dry	Dry
QCU	25	3*	Ave	7.8	438	109	<5
			Max	7.9	707	210	<5
QCD	26	4	Ave	7.9	547	187	<5
			Max	8.2	853	360	<5
WCU	23	3*	Ave	8.1	661	194	<5
			Max	8.3	1190	380	<5
WCD	24	2*	Ave	8.3	867	18	<5
			Max	8.4	1150	18	<5

\* Sample location was dry, muddy, no flow or no access during some or all the quarterly monitoring periods.

**Surface Water Quality – Discharge Monitoring**

Sampling of water discharged at the Licensed Discharge Points (LDPs) and Quipolly and Werris Creeks (Figure 8) was undertaken by WCC during the controlled discharge event.



	<b>Werris Creek Coal Mine Surface Water Monitoring</b>	MGA Zone 56 Date: Mar 2025 Scale: 1:30,000	Image: Dec 24 Author: A. Quiroz
--	--	--	------------------------------------

**Figure 8 - Surface Water Monitoring Network**

**Table 15 - Discharge Water Quality for LDP's and Offsite Creeks**

Licensed Discharge Point/ Creek	Monitoring Site (EPA No)	Number of Samples	Value	pH	Electrical Conductivity (µS/cm)	Total Suspended Solids (mg/L)	Oil & Grease (mg/L)
SB2	10	1	Ave	7.5	236	75	<5
			Min	7.5	236	75	<5
			Max	7.5	236	75	<5
SB9	12	0	Ave	-	-	-	-
			Min	-	-	-	-
			Max	-	-	-	-
SB10	14	3	Ave	7.0	90	91	<5
			Min	6.8	85	53	<5
			Max	7.2	93	134	<5
QCU	25	2	Ave	7.5	269	25	<5
			Min	7.4	236	24	<5
			Max	7.7	302	26	<5
QCD	26	2	Ave	7.6	299	61	<5
			Min	7.5	293	53	<5
			Max	7.8	305	68	<5
WCU	23	3	Ave	7.8	383	30	<5
			Min	7.7	231	10	<5
			Max	7.9	675	48	<5
WCD	24	3	Ave	7.9	399	154	<5
			Min	7.9	252	64	<5
			Max	8.0	664	321	<5

\* Sample location was dry during some of the discharge monitoring events.

**Bold** – indicates results outside criteria due to 5-day rain trigger >39.2mm.

**Surface Water Quality – Void Water Discharge - Irrigation**

No void water discharge irrigations were undertaken during the 2025 period.



Figure 8 - Surface Water Monitoring Network

### 7.3 GROUNDWATER MANAGEMENT

#### 7.3.1 Environmental Management

The management of groundwater at WCC is undertaken to achieve two goals, namely:

- Monitoring and measuring potential impacts from mining operations on adjacent aquifers and privately owned bores: and
- Dewatering and use of void water (rainfall runoff and groundwater) that is intercepted by mining operations.

WCC currently monitors 42 groundwater bores, located on the mine site and neighbouring properties, to measure potential impacts on groundwater quality and groundwater availability. WCC monitors groundwater quality and levels across a range of bores as shown in Table 16 and Figure 9. Monitoring bores in the Werrie Basalt are separated into those close to WCC and those further away, with select bores in both the Werrie Basalt and Quipolly Alluvium nominated as background monitoring bores, due to their location far upstream from WCC when considering the dominant groundwater flow contours. In addition, ten bores also contain logging piezometers, providing a higher resolution water level dataset to enhance the understanding gained from the bimonthly groundwater level sampling of the monitoring network. These piezometers have been placed to target certain zones, including the Werrie Basalt northwest, south and east of WCC, and the upper, middle and lower reaches of the Quipolly Alluvium aquifer in the vicinity of WCC. The groundwater piezometers have been replaced in 2024.

**Table 16 – WCC Groundwater Monitoring Program**

Precinct	Bores
Werrie Basalt near WCC	MW1, MW2, MW3, MW4B*, MW5, MW6, MW27, MW36A, MW36B*
Werrie Basalt	MW8#*, MW10, MW14, MW17B, MW19A, MW20, MW38A, MW38B, MW38C, MW38E, MW41* and MW43*
Quipolly Alluvium	MW7^, MW12, MW13, MW13B, MW13D, MW15, MW16, MW17A, MW18A, MW21A, MW22A*, MW22B, MW23A, MW23B, MW26B, MW28A#, MW32, MW40* and MW42*
Others	MW24A, MW29 (both Werrie Basalt in the Black Soil Gully valley) MW34 (minor alluvium associated with Werris Creek)
Monitoring Frequency	Parameters
Bimonthly	Standing Water Level
6 Monthly +	Total Nitrogen, Nitrate, Total Phosphorus, Reactive Phosphorus, Electrical Conductivity, pH
Annually	Chloride, Sulfate, Alkalinity, Calcium, Magnesium, Sodium, Potassium, Arsenic, Barium, Beryllium, Cadmium, Cobalt, Chromium, Copper, Manganese, Nickel, Lead, Vanadium, Zinc, Mercury, Ammonium, Nitrite, Nitrite+Nitrate, TKN, Anions, Cations, Ion Balance, TPH
# Regional monitoring bore	
* Groundwater logger installed in bore.	
+Applies to MW1, MW2, MW3, MW4B, MW5, MW6 in conjunction with bi-monthly depth monitoring	
^ Access to MW7 Is not available due to landholder restricting access for monitoring	

The Water Balance Model for WCC was updated as part of this Annual Review, with this model used to verify model assumptions in relation to groundwater interception in the mining void. A CUSUM statistical analysis was undertaken on all monitoring bores at the end of the reporting period to assess whether any bores show changes in water level outside of natural variability.

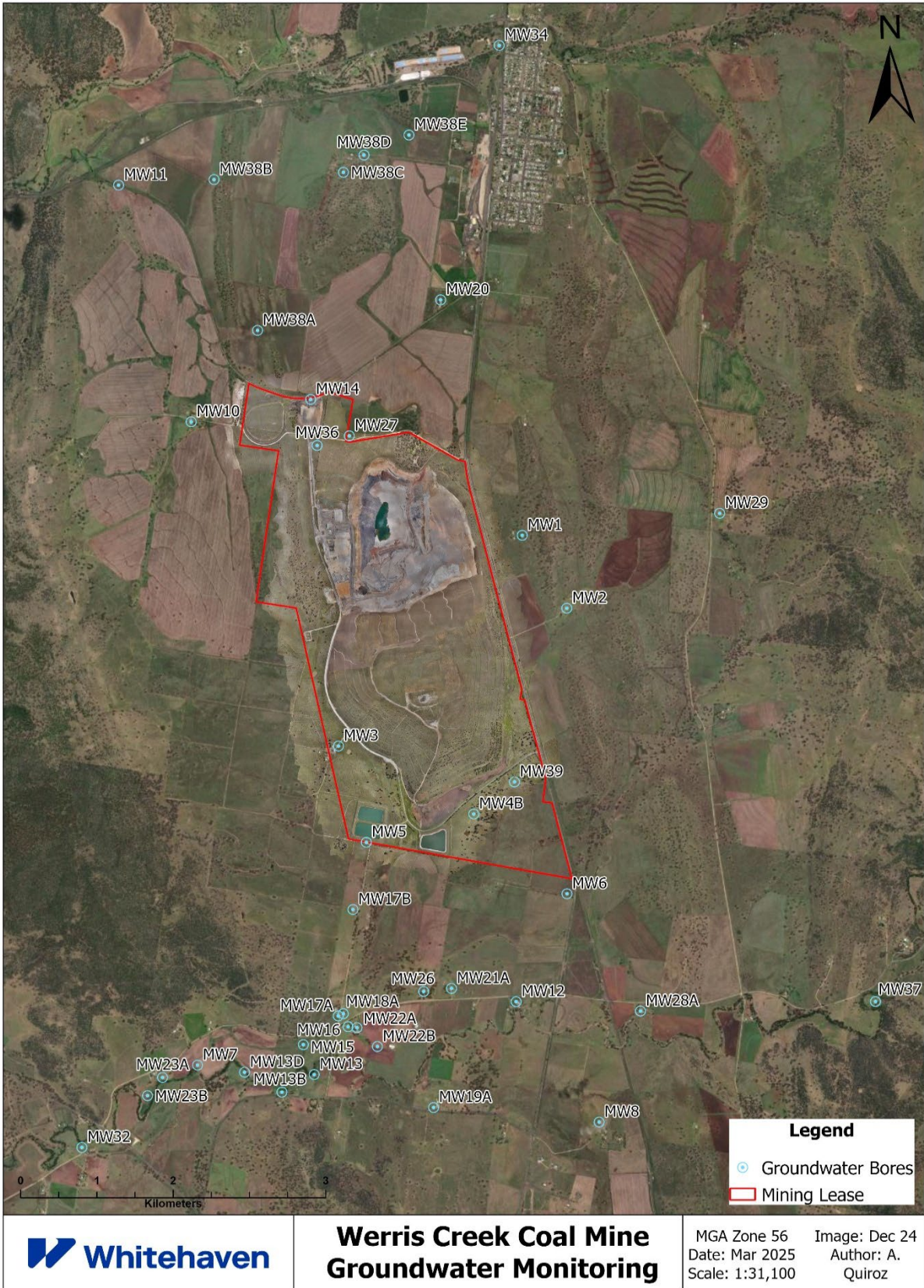


Figure 9 - Groundwater Monitoring Network

### **7.3.2 Environmental Performance**

Performance with respect to groundwater management, the prevention of pollution and the assessment of impacts on groundwater availability to other surrounding users, has been assessed through groundwater level and chemistry monitoring. Monitoring focuses on the Werrie Basalt and Quipolly Alluvium aquifers.

Table 17 presents the groundwater level monitoring data for January to December in the Werrie Basalt and Quipolly Alluvium aquifers. For Quipolly Creek Alluvium, MW28A and MW23A are representative of upstream and downstream aquifer conditions respectively. For Werrie Basalt, MW5 and MW14 are representative of aquifer conditions either side of the watershed between Quipolly Creek in the south and Werris Creek in the north. All groundwater sampling and analyses were undertaken by a NATA accredited laboratory.

Table 17 – Groundwater Monitoring Bore Level Summary – January to December 2025

Site	February-25		April-25		June-25		August-25		October-25		December-25		
	mbgl	%	mbgl	%	mbgl	%	mbgl	%	mbgl	%	mbgl	%	
Werris Basalt near WCC	<b>MW1</b>	57.09	0%	57.12	0%	56.95	0%	56.41	1%	55.48	2%	54.59	2%
	<b>MW2</b>	29.23	1%	29.67	-1%	29.98	-1%	29.10	3%	25.65	13%	24.96	3%
	<b>MW3</b>	15.38	0%	15.33	0%	15.28	0%	15.10	1%	14.84	2%	14.68	1%
	<b>MW4B</b>	12.39	-1%	12.42	0%	12.41	0%	12.20	2%	11.82	3%	11.48	3%
	<b>MW5</b>	8.62	-3%	8.53	-2%	8.42	2%	8.03	6%	7.78	8%	7.76	3%
	<b>MW6</b>	13.22	0%	13.15	1%	13.09	0%	13.02	1%	12.68	3%	12.37	3%
	<b>MW27*</b>	49.20	0%	48.74	1%	48.71	0%	48.75	0%	47.51	3%	47.25	1%
	<b>MW36A</b>	Not monitored		20.39	-10%	19.48	5%	20.33	-4%	19.57	4%	19.73	-1%
	<b>MW36B</b>	20.35	-4%	20.38	0%	20.47	0%	20.32	1%	19.61	4%	19.83	-1%
Werris Basalt	<b>MW8*</b>	13.20	-6%	13.58	-3%	13.35	2%	11.71	14%	10.61	10%	11.39	-7%
	<b>MW10</b>	10.28	4%	10.18	1%	9.18	11%	8.66	6%	7.28	19%	6.96	5%
	<b>MW14</b>	15.81	-5%	15.56	2%	15.55	0%	15.56	0%	14.40	8%	14.63	-2%
	<b>MW17B*</b>	9.35	99%	9.08	3%	8.98	1%	8.24	9%	8.02	3%	8.21	-2%
	<b>MW19A*</b>	7.46	-31%	5.61	33%	4.97	13%	3.63	37%	3.85	-6%	4.46	-14%
	<b>MW20*</b>	17.62	0%	17.61	0%	17.49	1%	17.26	1%	16.82	3%	16.64	1%
	<b>MW38A</b>	11.68	-4%	11.57	1%	11.68	-1%	11.45	2%	11.02	4%	10.48	5%
	<b>MW38B*</b>	9.23	-1%	9.31	-1%	9.12	2%	9.10	0%	9.11	0%	9.05	1%
	<b>MW38C*</b>	Pump over bore		Pump over bore		Pump over bore		Pump over bore		Pump over bore		Pump over bore	
	<b>MW38E*</b>	7.54	-2%	7.62	-1%	7.49	2%	7.25	3%	7.08	2%	7.13	-1%
	<b>MW41</b>	5.36	-4%	5.26	2%	5.10	3%	4.31	18%	4.27	1%	4.53	-6%
	<b>MW43</b>	4.72	-4%	4.61	2%	4.49	3%	4.01	12%	4.23	-5%	4.25	0%
#1	<b>MW24A*</b>	12.03	-4%	11.98	0%	11.96	0%	11.78	2%	11.77	0%	11.68	1%
	<b>MW29*</b>	10.72	-3%	10.42	3%	9.98	4%	9.95	0%	9.81	1%	10.41	-6%

mbgl – meters below ground level, the distance from top of bore to groundwater surface.

**Bold** –lowest recorded groundwater level measured during the reporting period.

Orange – Change decrease

Green – Change increase or no change

\* - Bore is used for water extraction unrelated to WCC (i.e. stock and domestic or irrigation).

#1 – Werris Basalt in the Black Soil Gully valley to east of Werris Creek Mine.

#2 - Werris Creek Alluvium.

Site		February-25		April-25		June-25		August-25		October-25		December-25	
		mbgl	%	mbgl	%	mbgl	%	mbgl	%	mbgl	%	mbgl	%
Quipolly Alluvium	<b>MW12*</b>	7.84	-8%	7.97	-2%	7.41	8%	6.52	14%	5.32	23%	5.90	-10%
	<b>MW13*</b>	4.71	2%	4.69	0%	4.68	0%	4.46	5%	4.56	-2%	4.66	-2%
	<b>MW13B*</b>	3.42	0%	3.39	1%	3.29	3%	3.11	6%	3.43	-9%	3.51	-2%
	<b>MW13D*</b>	4.36	6%	4.67	-7%	4.52	3%	4.06	11%	4.59	-12%	4.58	0%
	<b>MW15*</b>	No access		No longer monitored		No longer monitored		No longer monitored		No longer monitored		No longer monitored	
	<b>MW16*</b>	4.55	-7%	4.39	4%	4.32	2%	3.75	15%	3.57	5%	3.80	-6%
	<b>MW17A*</b>	3.60	-6%	3.45	4%	3.27	6%	2.73	20%	2.94	-7%	2.86	3%
	<b>MW18A*</b>	3.36	-10%	3.23	4%	3.10	4%	2.30	35%	2.43	-5%	2.59	-6%
	<b>MW21A*</b>	6.21	-9%	6.21	0%	5.89	5%	5.21	13%	4.31	21%	4.55	-5%
	<b>MW22A*</b>	4.52	-7%	4.45	2%	4.25	5%	3.61	18%	3.54	2%	3.75	-6%
	<b>MW22B*</b>	4.63	-6%	4.59	1%	4.39	5%	3.71	18%	3.60	3%	3.80	-5%
	<b>MW23A*</b>	3.66	8%	3.66	0%	3.59	2%	3.17	13%	3.56	-11%	3.73	-5%
	<b>MW23B*</b>	3.89	-5%	3.92	-1%	3.90	1%	3.47	12%	3.87	-10%	3.99	-3%
	<b>MW26B*</b>	4.87	-9%	4.84	1%	4.52	7%	3.63	25%	3.48	4%	3.55	-2%
	<b>MW28A*</b>	9.15	-20%	8.48	8%	6.96	22%	5.70	22%	5.04	13%	6.68	-25%
	<b>MW32*</b>	3.92	0%	3.83	2%	3.77	2%	3.78	0%	3.78	0%	3.81	-1%
<b>MW40</b>	5.32	-4%	5.29	1%	5.09	4%	4.32	18%	4.24	2%	4.49	-6%	
<b>MW42</b>	4.66	-3%	4.56	2%	4.45	2%	3.96	12%	4.07	-3%	4.16	-2%	
#2	<b>MW34*</b>	Pump over bore		Pump over bore		Pump over bore		Pump over bore		Pump over bore		Pump over bore	

mbgl – meters below ground level, the distance from top of bore to groundwater surface.

**Bold** –lowest recorded groundwater level measured during the reporting period.

Orange – Change decrease

Green – Change increase or no change

\* - Bore is used for water extraction unrelated to WCC (i.e. stock and domestic or irrigation).

#1 – Werris Basalt in the Black Soil Gully valley to east of Werris Creek Mine.

#2 - Werris Creek Alluvium.

The persistent dry period in NSW that occurred from 2017 to early 2020 caused a large reduction in groundwater levels and resulted in the majority of WCCM bores exceeding their Cusum trigger limits at the end of 2020. During 2021 and 2022, recovery of groundwater levels has been observed in most bores across the WCCM area, with most bores observing a reversal in Cusum trend (to a decreasing depth to groundwater trend) and dropping beneath their trigger limits and back into the acceptable Cusum range. At the end of 2023, the following bores are still exceeding their respective Cusum trigger limit; MW15 in the Quipolly Alluvium and MW1, MW2, MW4b, MW5, and MW6 that monitor the Werrie Basalt. This is a reduction in the number of exceedances since 2025 reporting. Since 2013 it appears that within the near Werrie Basalt bores (MW1, MW2, MW4b, MW5 and MW6), there has been a more muted response to rainfall events within all bores, which may indicate a mining effect. These include MW1, MW4b, MW6, and MW39 that all show reduced recovery after four wet years (compared to their historic levels, and to other bores), with groundwater levels at the end of 2023 still up to 5 m below pre-mining levels. MW2 is also a supply bore and heavily influenced by pumping and should therefore not be used to assess natural groundwater level variations in the wider aquifer. All other monitoring bores at WCCM show correlations in depth to groundwater trends with the rainfall conditions, with increasing trends observed over the first half of 2025 with the above long-term average rainfall conditions. Electrical conductivity, as a proxy for salinity, exceeds the upper trigger level in only MW5c, though this is not considered to be representative of aquifer wide trends or impact from mining. Nitrate exceedances are widespread across the Quipolly Alluvium aquifer, though this is not considered linked to mining activity as the Werrie Basalt (hydraulically between the mine and the Quipolly Alluvium) does not also show high nitrate concentrations. No other bore shows prolonged elevated concentrations for any of the other GWMP parameters, and the likely cause for these occasional trigger level exceedances is the surrounding agricultural land use (cereal cropping, improved pastures, and grazing land).

### **Quipolly Alluvium Aquifer**

The Quipolly and Werris Creek alluvial deposits typically comprise clay overlying sand and gravel. The alluvium is considered to behave as an unconfined aquifer, predominantly recharged by rainfall and stream flow infiltration (DPI, 2019). Groundwater levels recorded in selected monitoring bores screening the Quipolly Alluvium aquifer are shown in Figure 10. Several of the alluvial monitoring bores are water supply bores (stock and domestic and/ or irrigation) with water levels sometimes reflecting a significant influence from pumping. Therefore, the bores plotted in Figure 10 are those which show limited pumping influence, to demonstrate the natural variations in groundwater levels at WCCM.

Groundwater levels within the alluvium typically mimic local rainfall patterns, most notably in MW28a and MW26b, with a more subdued response in the others. There are three periods of decline in the CRD (trending years below long-term average rainfall), from 2013 to 2016 and 2017 to 2019, and late 2022 to late 2023, in which we see reciprocated responses in groundwater with level declines. Similarly, groundwater level increases correlate with periods of above average rainfall. Most noticeably, the 2020

to mid-2022 wet years show groundwater level recovery in all bores reaching above historical maximum, or near maximum, recorded groundwater conditions.

The significant increase in groundwater levels in late September 2016 is coincident with the overflow of Quipolly Dam, located upgradient of these bores, with the bores closest to the dam demonstrating a greater response to this event (SLR, 2021b). The decrease in groundwater levels seen over the first half of 2022 in MW28a and to a lesser extent, MW26b, are attributed to extraction from, or in the vicinity of, these bores during this wet period.

Groundwater levels show a higher variability in upstream bores along Quipolly Creek. In Figure 10, the furthest upstream monitoring bore MW28a shows the greatest fluctuations in alluvial groundwater levels whilst MW32, the furthest downstream monitoring bore, shows the least. This is thought to be due to the limited catchment for these bores and their proximity to Quipolly Dam releases and runoff from the weathered basalt from the east. This results in greater range of recharge and recession compared to bores further down the alluvial catchment. It is noted that this groundwater regime has not changed since open cut mining began in 2005, with greater groundwater level recovery in 2020 to 2022 still observed in upstream bores.

Groundwater levels in the reporting period are again commensurate with CRD, showing mild fluctuation both up and down with rainfall variability.

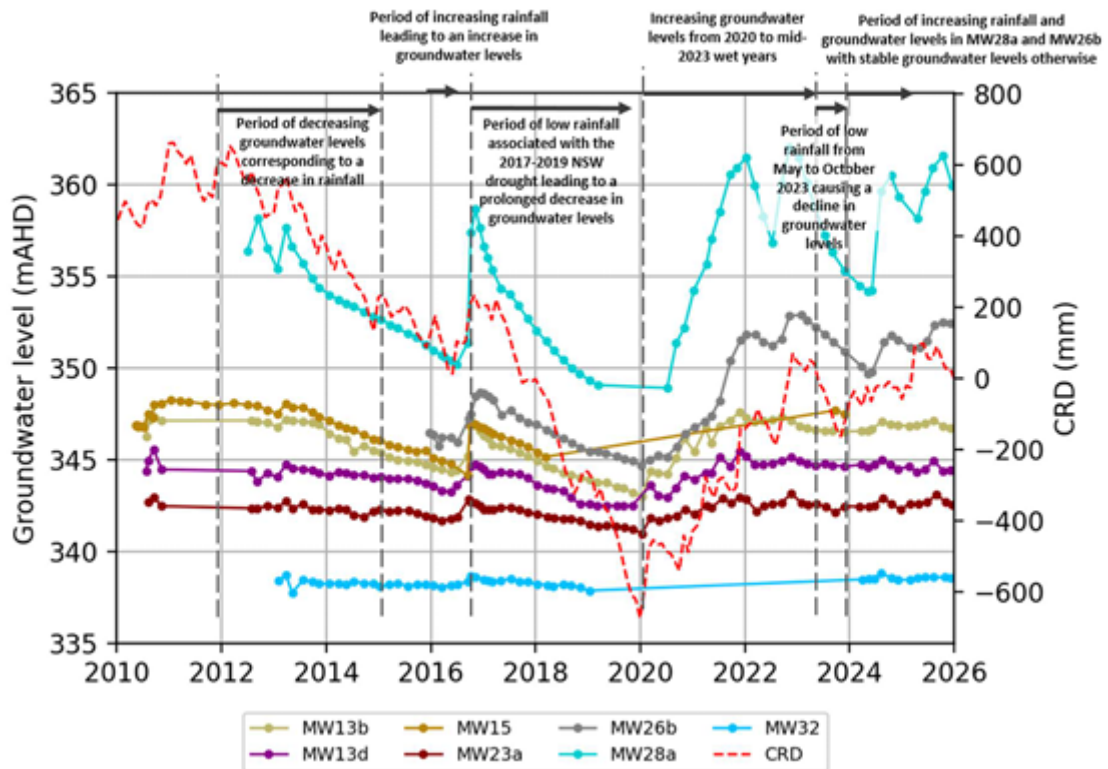


Figure 10 - Groundwater levels in Quipolly Alluvium compared to cumulative rainfall

### Werrie Basalt Aquifer

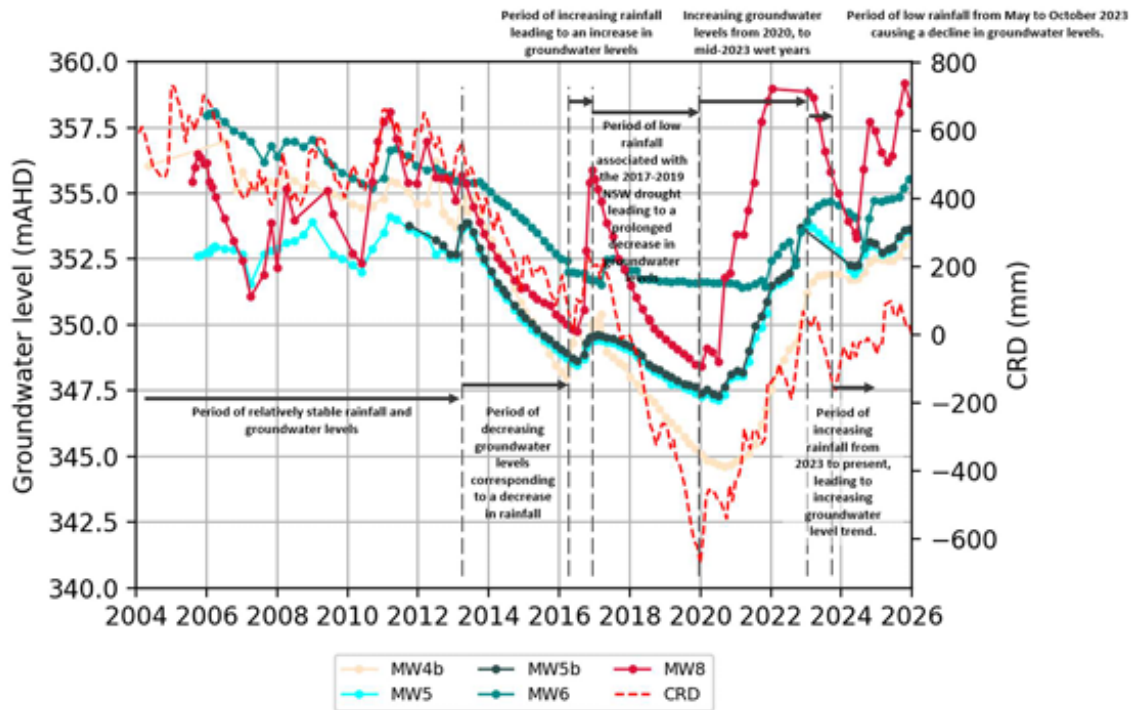
Water levels in the Werrie Basalt aquifer for selected bores are shown in Figure 11. The surface of the Werrie Basalt has weathered to a clay layer that acts as a confining or semi-confining layer to the basalt aquifer. Due to the presence of the overlying weathered basalt layer, the majority of recharge to the basalt aquifer is considered to occur to the west and east of WCCM where clay capping to the basalt may be thinner or absent (SLR, 2021b), and to the west and east across the more permeable sandstone ridges of the Temi and Currabubula formations which underlie the basalt.

As seen in Figure 11, groundwater levels in the Werrie Basalt bores are responsive to climatic condition, represented by the CRD trend. Overall, there is a general downward trend in groundwater levels associated with lower than average rainfall until 2020. With the onset of above average rainfall conditions in 2020, there is an observed recovery in groundwater levels. There is a muted response observed to climatic conditions, particularly in MW6, and also MW5 and MW5b, potentially due to the low levels observed in these bores.

Groundwater levels within MW8, the furthest bore from WCCM and considered the 'baseline bore', show a greater response to rainfall events in 2020 to 2022, with a recovery of groundwater levels back to above those observed in 2004. In contrast MW4b, the closest bore to mining at WCCM, observes the most pronounced drawdown during the 2017 to 2019 drought with recovered groundwater levels at the end of 2022 are still approximately 7.5 m lower than those recorded in 2004. Despite the above average rainfall conditions over 2020 – early 2023 and 2024 -2025, bores MW4b and MW6 still have a component of drawdown that has not recovered to pre-mining condition.

In comparison to the hydrograph for the alluvial bores (Figure 10), the groundwater decline in the latter half 2023 shows a greater lag time to the start of the dry conditions (May 2023 onwards). Groundwater levels vary more than those in the alluvium, with a greater difference between groundwater peaks and troughs, potentially a result of lower storage in the basalt.

Within the 2025 reporting period rainfall conditions appear to be generally above average before stabilising, as evidenced by a relatively sharp CRD line followed by minor fluctuations. However, all bores appear to be showing an increase in groundwater levels, which may indicate a recovery of groundwater as mining operations ceased. Ongoing monitoring will be required to validate this conclusion.



**Figure 11 - Groundwater levels in Werrie Basalt compared to cumulative rainfall**

**Groundwater Quality**

None of the bores that have exceeded the lower water quality limits for any of the water quality parameters are considered significant in the context of this assessment. These lower limit exceedances are overall due to the detection limits of the equipment used, the small differences in most cases from the actual lower limit (for example, 0.9 vs 1.1), and the fact that low levels are usual in groundwater. It is also acknowledged that a reduction in these parameters results in an improvement in water quality, and that a drop below the lower limit is not considered concerning in terms of water quality.

No electrical conductivity (EC) exceedances were recorded for the 2025 reporting period within the Quipolly Alluvium. MW17a, MW18a and MW21a have shown decreasing trends in EC since 2022, 2016 and 2023 respectively. Additionally, MW32 has shown fluctuations in EC above and below the lower limit since 2018.

Two exceedances of the upper trigger limits were observed for the Werrie Basalt aquifer, at MW1 for pH and MW5c in electrical conductivity. MW1 exceeded the lower trigger limit for pH, after a sharp declining trend from 2024, where it was sitting at the upper trigger limit of 8.4. Further monitoring is recommended to ascertain the nature of the fluctuation and identify if the downward trend is ongoing. During the 2025 monitoring period, exceedance of the upper limit was observed at MW5c for EC. MW5c has only been monitored since March 2020, with all the measurements sitting above the upper electrical conductivity limit for the Werrie Basalt showing a slight increasing trend. This is not considered an

exceedance of the upper limit as it is likely that this is due to a local effect, such as agricultural land use surrounding the bore, as elevated EC is not widespread across the Werrie Basalt aquifer, and thus the upper limit for the Werrie basalt is not appropriate for MW5c

Exceedances in pH were observed at MW13b, MW21a, MW21b and MW26b. MW13b showed an elevation in pH recorded from the last reporting period, which was below trigger limits, whereas MW21a, MW21b and MW26b have reported their second consecutive exceedance. MW21b has shown fluctuations above and below the upper trigger limit since 2019. MW26b in contrast has a general increasing trend over the last 5 years, with the latest observation showing the highest pH value. Given only two locations have exceedances it is not considered “widespread”.

MW7 and MW7b exceed the nitrates upper trigger limit. MW7, MW7b, and MW13b exceed the total nitrogen trigger limit. MW7 and MW7ba both show a second consecutive exceedance of the nitrate trigger level. They also show a second consecutive exceedance for total nitrogen, while MW13b shows its fifth consecutive exceedance. Due to the widespread (three or more bores), the Quipolly Alluvium is considered at a level 2 performance criteria for nitrates. However, the exceedance of the level 2 performance criteria is not anticipated to be linked to mining activity, as the Werrie Basalt (hydraulically between WCCM and the Quipolly Alluvium) does not show high nitrate concentrations. It is noted that higher nitrate and total nitrogen have been observed in the Quipolly Alluvium previously. Therefore, it is likely that the high nitrate and nitrogen readings are linked to the surrounding agricultural land use, though it is recommended that monitoring continues to observe if there is a continued increasing trend that may be indicative of mining activities, or a short-term trend linked to third-party land use activities in the vicinity of WCCM.

### 7.3.3 Proposed Improvement Measures

The groundwater monitoring program described above will continue to be implemented during the next reporting period.

## 7.4 SITE WATER BALANCE MODEL VALIDATION

The WCC Water Balance Model is focused on accounting for all water entering and leaving the open cut pit to allow a verification of groundwater interception during the reporting year (Table 18). The key inputs to the water balance model are:

- Direct rainfall and runoff – Generally the largest input due to the large pit catchment, this item relates to rainfall that falls directly in the void water catchment. During any rainfall event, runoff is significant due to the large catchment and hard, compacted surfaces.
- Evaporator’s recharge – Evaporator sprays were utilised up until July 2024 to reduce the volume of void water stored on site. A portion of this water will not evaporate but instead percolate through the accumulated spoil until it collects in the void.

- Dust Suppression – To minimise the generation of dust from vehicle movements, water is applied directly to haul roads and dumps. Furthermore, water may be applied to excavator loading faces and production drills to minimise the generation of dust at these points.
- Groundwater – Located within the Coal Measures sequence, the enclosed basin contains various small-scale water bearing zones generally associated with the coal seam. A small proportion of groundwater may also be derived from the Werrie Basalt aquifer.
- Overburden Dump Seepage – Water from Dam 8 on the overburden dump seeps through and is accumulated in the pit.

The key outputs to the model include:

- Pit dewatering – Includes all water pumped from the pit during the year, which is the principle pathway for water leaving the void.
- Irrigation – Includes void water tested and approved for offsite irrigation from VWD 1 onto cropping land.
- Direct evaporation – Includes the volume of water directly evaporated from the pit and other locations within the void water cycle.
- Use of water onsite – Dust suppression, Evaporators, etc.

**Table 18 – Water Balance Inputs and Outputs.**

	Description	Wet Year MI/Year 816mm
<i>Water Source (Inputs)</i>	Total runoff	541
	Groundwater inflow	49
	<b>Total Input</b>	<b>590</b>
<i>Water Losses and Usage (Outputs)</i>	Evaporation (from water storage)	221
	Haul road and ROM pad dust suppression	45
	Irrigation loss	0
	Evaporator net loss	0
	Workshop water use	0
	TLO Water use	0
	Crushing Plant water use	0
	Pumped sediment dam discharge	0
	Sediment dam spills	0
	<b>Total Output</b>	<b>266</b>
<i>Water Surplus/ Deficit</i>	<b>Total Input-Total Output</b>	<b>324</b>

As presented in, Table 18 once inputs, outputs and the observed change in water in the void have been accounted for, the model reflects a net increase of 324ML. The site water balance shows a slight reduction of overall site water inventory but an increase in pit water storage due to ceasing pit dewatering.

## 8 REHABILITATION

### 8.1 REHABILITATION PERFORMANCE DURING THE REPORTING PERIOD

The rehabilitation objectives for WCC are described in the Rehabilitation Management Plan. The post mining land use goal for WCC is to reinstate certain areas of the mine to White-box Grassy Woodland communities and to ensure rehabilitation and revegetation is self-sustaining.

As discussed in Section 8.2 the rehabilitation monitoring observed that tree species matching closely with Box Gum woodland TEC/EEC canopy assemblages, including *Eucalyptus melliodora*, *E. blakelyi* and *E. albens*, were frequently observed to be establishing satisfactorily. Monitoring of rehabilitation using the newly established methodology will continue in 2026. Section 8.2.2 discussed rehabilitation progression towards identified Plant Community types (PCT).

During the reporting period, mining operations progressed in line with the proposed forward plan. In 2025 works were undertaken to progress approx. 86ha to final landform and ecosystem establishment. All infrastructure continued to be in use during the period, and as such, no areas of infrastructure were rehabilitated during the period.

2024 rehabilitation works included the planting of approximately 20,830 native tube stock coupled with and watering.

### 8.2 REHABILITATION MONITORING

#### 8.2.1 Introduction

A detailed annual ecological assessment of rehabilitated areas and analogue sites was undertaken during September-October 2025. Monitoring was undertaken using the Whitehaven Annual Rehabilitation Monitoring Methodology (ARMM: Aspect Ecology, 2024.). Completion criteria targets are limited to mean targets derived from analogue site values or specific values provided in the RMP. The New South Wales Department of Planning and Environment BioNet benchmarks listed in the RMP have been superseded in a recent revision (Oliver et al., 2019) and have been omitted from this report. Analogue benchmark values have been derived using all available analogue site data from current and prior monitoring years.

Monitoring in the Woodland Domain comprised:

- thirty-one repeat monitoring woodland rehabilitation sites
- three newly established woodland rehabilitation sites

- one repeat monitoring analogue woodland site and
- twenty-two categorical rehabilitation point assessments at notable locations within the Woodland rehabilitation.

### Groundcover

#### **Woodland: Surface Cover**

Surface cover has remained stable from 2024. In 2025 majority of sites have met their benchmark goals, with older sites 2007, 2008 and 2011 areas exceeding benchmark. 2013 has improved from 2024 now exceeding benchmarks. 2014 and 2015 areas have declined to below benchmarks after consistently meeting benchmarks. 2023 area reached benchmark in

#### **Native vegetation groundcover**

Native vegetation has collectively decreased by 0.2% since 2024. No sites have yet reached benchmark. 2007 is a stable but has remained below benchmark. 2008, 2011, 2014, 2020 and 2023 have seen a decline. However, 2013, 2015 and 2022 have seen improvement but do remain below benchmark, further 2013 is still below its originally higher levels in 2021.

#### **Native Grass Cover**

2 of 11 rehabilitation sites, 2007 and 2011 areas, have met completion criteria for native grass cover in 2025. All other areas were below target with 2013 site higher than the 90% percentile target. 2025 is excluded from this target due to it not yet being old enough for phase-specific targets.

### Midstorey

Only 2007 - 2014 areas within their ecosystem development phase of this assessment. However, none of these have met the target midstorey in 2025. These were well below benchmark 0.9 – 20.17 with the ranges of only 0 - 0.2

### Overstorey

Areas 2007 – 2014 are within their ecosystem development phase of this assessment. However none of these areas have met their overstorey targets. 2008 is the closest to meeting the 10<sup>th</sup> percentile target range (10%) with 8.3%.

## Richness

### **Native Species Richness**

Native species richness saw an increase on average in 2025 compared to the 2024 but no locations reached benchmarks. 2008 and 2014 areas saw a decrease in 2025 but 2011 area has remained stable. 2016 and 2022 saw an increase on 2024 with the 2023 areas also having a notable increase on its 2024 levels. 2020 area has also had a consistent recovery since 2023.

### **Native Shrub Richness**

2 of 11 rehabilitation areas (2021 and 2022) met native shrub species richness targets in the 2025 monitoring. All other areas, excluding 2020 have recorded 0 species indicating a lack of overstorey presence.

### **Native Tree Richness**

None of the rehabilitation areas have met their native tree richness targets in 2025. The closest areas to the targets is 2020 and 2021 with all other areas being well below target ranges.

## Density

### **Native Shrub Density**

In 2025, 6 of the 6 phase specific rehabilitation areas (2015, 2020, 2021, 2022, 2023 and 2024) have met the native shrub density target with a range of 0 to 8 individuals per 400 m<sup>2</sup>

### **Native Tree Density**

In 2025, no rehabilitation areas met the native tree density targets in 2025. On average this has decreased since 2024 monitoring. Declines were seen in areas 2008, 2011, 2013, 2014 2020, 2021 and 2023. Conversely 2022 area doubled compared to 2024. 2007 and 2015 remain stable but below target. 2024 area is stable with 0 tree density.

## Species Composition

In 2025, exotic grasses were dominate across all rehabilitation areas with the most widespread being Annual Ryegrass (*Lolium rigidum*). Dominant native grasses varied between rehabilitation and analogue areas. Bamboo Spear-Grass (*Austrostipa verticillata*) was abundant at analogue sites but sparse/absent in rehabilitation and conversely Blue Grass (*Dichanthium sericeum*) and Plump Spear Grass (*Austrostipa aristiglumis*) was abundant in rehabilitation but rare in analogue areas. Dominant tree species was Yellow Box

(*Eucalyptus melliodora*) at analogue locations and White Box (*Eucalyptus albens*) at rehabilitation.

### Weed Presence

In 2025, rehabilitation areas generally showed a reduction in exotic species richness compared to 2024, indicating a positive trend. The 2013 area had the largest decrease, with notable reductions also in the 2008, 2020, 2015, 2021 and 2023 areas. The 2022 area has shown consistent improvement since 2023. The 2024 area maintained low exotic richness in its second year. However, slight increases occurred in the 2007 and 2011 areas, whereas the 2014 area, despite a decline in 2024, remains higher than its historical conditions pre-2024.

### **Recommendations**

It is recommended that:

- Following weed control efforts (where required) management actions such as supplementary seeding and tubestock planting be undertaken to increase native vegetation groundcover.
- Native mid-storey cover be enhanced through tubestock planting.
- Weed management Hairy Vetch (*Vicia villosa*) and reduce the frequency of Turnip Weed (*Rapistrum rugosum*).
- Further actions to control feral pigs be investigated and actioned.

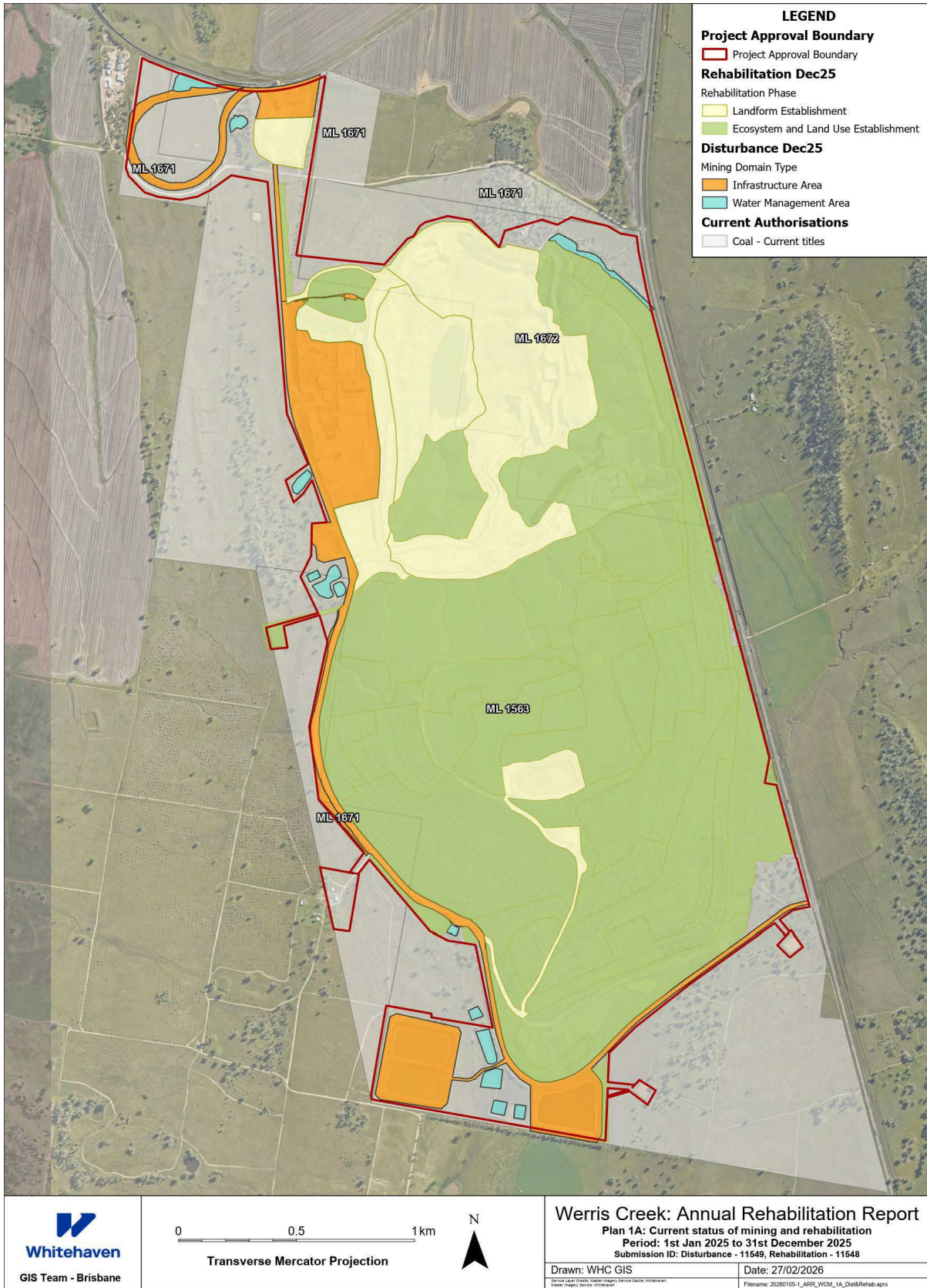


Figure 12 - Rehab Status Dec 2025

### 8.3 REHABILITATION TRIALS, PROJECTS, AND INITIATIVES

During the reporting period a hydromulching trial was undertaken. Hydromulching is a technique that sprays a slurry of water, seed and ameliorants onto a surface to create a growth medium. The hydromulch was applied to the remaining highwall in a selected area; the highwall is a vertical, exposed rock surface. This area has been visually monitored with no evidence of successful vegetation establishment. Consequently, it has been determined that this technique will not be used further.

### 8.4 REHABILITATION WORKS PROPOSED FOR NEXT REPORTING PERIOD

Table 19 presents a summary of the disturbance classes for the end of the previous reporting period, the end of the current reporting period, and a forecast as at the end of the next reporting period and Figure 13 identifies the rehabilitation categories as of December 2025.

**Table 19 – Rehabilitation Status**

Mine Area Type <sup>1</sup>	Previous Reporting Period 2024	This Reporting Period 2025 (Actual)	Next Reporting Period 2026 (Forecast)
	2024 (ha)	2025 (ha)	2026 (ha)
A. Total mine footprint	603.2	466.7	587.3
B. Total active disturbance	210.87	76.8	76.84
C. Land being prepared for rehabilitation	73.25	120.6	120.59
D. Land under active rehabilitation	304.82	389.8	510.46
E. Completed rehabilitation	0	0	0

<sup>1</sup> Refer Annual Review Guideline (p.11) for description of mine area types.

No areas of rehabilitation at WCC have received formal signoff for completion; however, areas under active rehabilitation as listed in item D above are trending well towards completion.

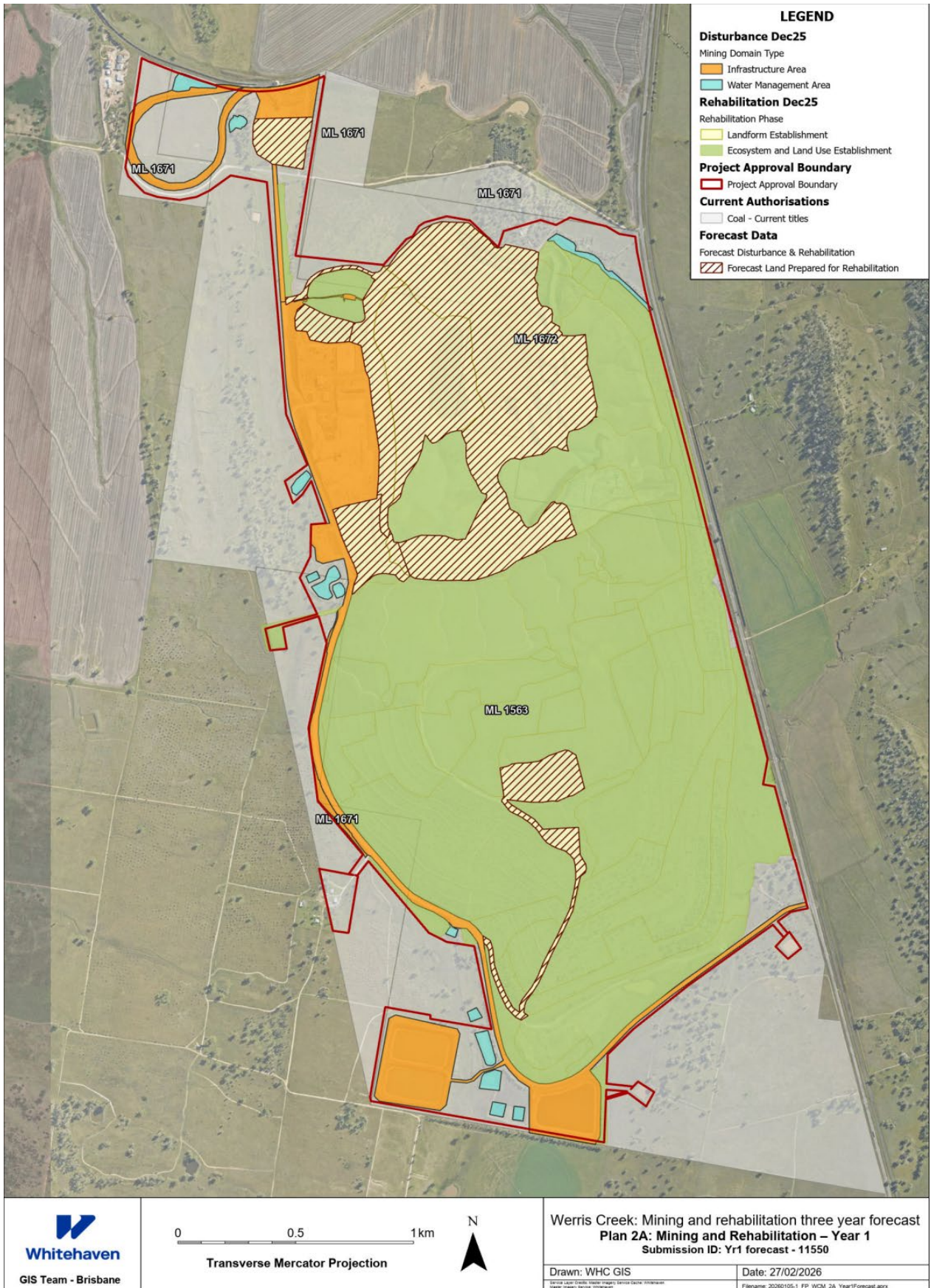


Figure 13 - Forecast Rehabilitation 2026

In the next reporting period, rehabilitation will focus on topsoiling and seeding the remaining section of the pit that was taken to final landform in 2025 and will continue to be land formed into the next reporting period.

As shown in Figure 13 approx. 113ha will be progressed from “under rehabilitation” to “ecosystem establishment” via the spreading of seed and planting of native tube stock in the next reporting period.

Existing areas of rehabilitation will be managed to ensure a continued trend towards the rehabilitation objectives as previously described. This will include significant focus on infill planting on existing established areas with native tube stock including relevant mid storey species coupled with increased weed management programs to target any emerging weed issues.

## **8.5 KEY ISSUES TO ACHIEVING SUCCESSFUL REHABILITATION**

There are two key issues in achieving successful rehabilitation, including:

- Managing weed and feral animal infestation;
- Improving landform water management to reduce erosion and sedimentation resulting in instability and vegetation growth issues;

In cases where the performance is sub-optimal, additional management measures will be implemented (e.g. replanting, repairing landform and water management features, application of mulch/fertilisers, feral animal and weed control etc.).

## **9 COMMUNITY**

WCC is located approximately 2 km south-southwest of the residential area of Werris Creek and 1.5km north of the rural community of Quipolly, and as such works closely with these communities to provide beneficial outcomes resulting from coal mining activities at WCC.

### **9.1 COMMUNITY ENGAGEMENT ACTIVITIES**

WCC uses a variety of community engagement and consultation methods including the WCC Community Consultative Committee (CCC), regular updates to the Whitehaven Coal website, designated community telephone complaints lines, local media updates, local school visits, sponsorship of local community events and groups, and meetings as required with neighbours and a range of stakeholders including government and non-government agencies.

In addition, there were two (2) CCC meetings held during the 2025 reporting period.

### **9.2 COMMUNITY CONTRIBUTIONS & INITIATIVES**

WHC, which includes WCC, contributes financially to the economy at both state and federal level and to the communities in which we operate. Employees and contractors also add a significant economic contribution to townships in the Liverpool Plains Shire Council (LPSC) through their purchases from local businesses. Whitehaven Coal has contributed in excess of \$1 billion to the North West NSW region since 2012.

### Community Enhancement Fund (CEF)

Community contributions are managed in accordance with the Whitehaven Coal Donations and Sponsorship Policy. Whitehaven Coal donated \$245,490 to local Gunnedah groups and over \$101,361 to support local groups in Liverpool Plains (Quirindi, Werris Creek, Wallabadah, Tamworth) during the reporting period. Groups and activities which received contributions included, but were not limited to the following;

#### Gunnedah

yawiriawiri murri ganuur descendants  
 rotary club Gunnedah west  
 Carroll community bus incorporated  
 swimming Gunnedah incorporated  
 Extent  
 the combined catholic schools p&f  
 Winganga Li Early Learning and Care Services  
 CrossFit Gunnedah  
 Gunnedah High School  
 Gunnedah Filipino Australia Community  
 Gunnedah Junior Rugby Club Incorporated  
 Gomerioi Roos  
 Australian Whipcrackers & Plaiters Association  
 Multicultural Women's Association Inc Charity no.  
 Gunnedah and District Bulldogs AFL  
 Naidoc Week Committee Incorporated  
 The Central Noth Rugby Union  
 Gunnedah Bulldogs  
 Gunnedah Shire Council  
 Gunnedah and District Chamber of Commerce  
 Women in Mining  
 Gomerioi Allstars  
 Gunnedah Pistol Club  
 Lions Club of Gunnedah  
 Gunnedah Junior Rugby Club Incorporated  
 Eric & Carol Hannan  
 Boggabri Gunnedah Gun club  
 Gunnedah Ministers Fraternal

#### Liverpool Plains

Tamworth P & A Assoc Inc  
 Tamworth Touch Association  
 Spring Ridge Public School P & C  
 Tamworth Touch Association  
 Quirindi High School  
 Tamworth Business Chamber  
 Wallabadah Public School  
 Tamworth Family support service  
 Quirindi RSL sub-Branch  
 Walhallow Public School  
 Quirindi Rugby  
 Children's Medical Research Institute - Quirindi Branch  
 Quirindi Netball  
 Aircooled Assembly Inc  
 One 2 boxing  
 The old Boys Cricket  
 Blackville Public School  
 North West Cow Horse Inc  
 One2Boxing Westside Boxing Club Inc  
 Manilla Show  
 Quirindi Rural Heritage Village  
 Werris Creek Golf Club  
 lions club werris creek  
 The Werris Creek Community Garden  
 Rotary Club of Tamworth First Light  
 The Lions Club of Werris Creek Inc Charity no.  
 Werris Creek RLFC Magpies  
 Werris Creek Swimming Club Incorporated

- |  |                                     |
|--|-------------------------------------|
| Dorothea Mackellar Poetry Awards               | One2Boxing Westside Boxing Club Inc |
| Lake Keepit Fishing Club                       | Quirindi show society inc.          |
| The Red Chief - Local Aboriginal Local Council | ABCRA                               |
| Gunnedah Shire Council                         |                                     |
| Gunnedah Shire Council                         |                                     |
| Gunnedah Swimming                              |                                     |
| cougar warriors                                |                                     |
| Gunnedah Shire Council                         |                                     |
| Plains of Plenty                               |                                     |
| Gunnedah Meals on Wheels                       |                                     |
| Curlewis PS P&C                                |                                     |
| Movember Foundation                            |                                     |
| Gunnedah and District Chamber of Commerce      |                                     |
| Gunnedah South Public School P&C Association   |                                     |
| Gunnedah Can Assist                            |                                     |
| Gunnedah Shire Council                         |                                     |
| Gunnedah High School                           |                                     |
| Gunnedah High School                           |                                     |
| Gunnedah & District Chamber of Comm            |                                     |
| PCYC Gunnedah                                  |                                     |

### 9.3 COMMUNITY COMPLAINTS

WCC maintains a dedicated community telephone complaints line (1800 942 836) which is published at the mine entrance and on the Whitehaven Coal website. In the event of a complaint or enquiry, details pertaining to the complainant, the complaint and action taken is recorded in the complaints register. The register is available on the Whitehaven website.

No community complaints were recorded for 2025.

**Table 20 – WCC Complaints 2025**

Issue	2018	2019	2020	2021	2022	2023	2024	2025
Blast - Vibration/Overpressure	19	12	5	13	3	1	0	0
Blast - Dust/Fume	2	1	0	0	0	0	0	0
Blast/Other	0	0	1	0	0	0	0	0
Noise – Mine	0	0	0	0	1	1	0	0
Dust – Mine	5	3	0	0	0	0	0	0
Surface Water	0	0	0	0	0	0	0	0
Odour	8	1	0	0	0	0	0	0
Water- evaporation	1	0	0	0	0	0	0	0
Other	0	0	0	2	0	1	0	0
<b>Number of Complaints Raised*</b>	<b>35</b>	<b>17</b>	<b>6</b>	<b>15</b>	<b>4</b>	<b>3</b>	<b>0</b>	<b>0</b>

\* Number of complaints does not equal the number of issues raised as one complaint can raise multiple issues.

## 10 INDEPENDENT AUDITS

No Independent Environmental Audit (IEA) was undertaken at WCC during the 2025 reporting period.

The next Independent Environmental Audit and Independent Noise Audit is scheduled for 2026.

## 11 INCIDENTS AND NON-COMPLIANCES DURING THE REPORTING PERIOD

### 11.1 REPORTABLE INCIDENTS

No reportable incidents occurred during the reporting period.

### 11.2 NON-COMPLIANCES

The compliance status of WCC against relevant approvals during the reporting period was assessed in Section 1 as at the end of the reporting period (2025). There were no outstanding actions or non-compliances relating to operations undertaken in 2025.

**Table 28 – No-compliance Details and Proposed Action Plan**

Non - Compliance	Date / Location	Cause	Action Plan	Completion Date
Clause 12 of Schedule 8A of the <i>Mining Regulation</i>	27 March 2025	Failure to submit a plan rehabilitation objective statement and final landform rehabilitation plan within the required timeframe	Submitted the plan rehabilitation objective statement and final landform rehabilitation plan by 5:00pm, 9 May 2025	Submitted on the 11 April 2025.

### 11.3 REGULATORY ACTIONS

On the 27 March 2025 WCC received a Written Notice from the Resource Regulator. WCC was directed to prepare an updated rehabilitation objective statement and updated final landform and rehabilitation plan as defined in Clause 12 of Schedule 8A of the *Mining Regulation 2016* and provide it to the Secretary for approval.

The updated rehabilitation objective statement and updated final landform rehabilitation plan was provided to the Secretary on the 11 April 2025 before the due date of 5:00PM 9 May 2025.

### 12 ACTIVITIES TO BE COMPLETED IN THE NEXT REPORTING PERIOD

Activities to be completed in the next reporting period to improve the environmental or community performance of WCC.

**Table 29 – Activities proposed to be completed in the next reporting period**

Activity	Timeframe
Completion of review and, if necessary, revision of Environmental Management Plans – submit to relevant Govt agencies and stakeholders for consultation / sign off as relevant.	In accordance with PA 10_0059
Continued community liaison and engagement with local stakeholders	Ongoing
Focus on rehabilitation	Ongoing
Demolition of fixed infrastructure	Dec 2026

## Department of Planning, Housing and Infrastructure

Reference: MP10\_0059-PA-59

██████████  
Group Manager - Biodiversity  
Werris Creek Coal Pty Ltd  
14/05/2026

---

Sent via the Major Projects Portal only

Subject: Werris Creek Coal - Annual Review 2025

Dear ██████████

I refer to your Annual Review for the period 1 January 2025 – 31 December 2025 submitted as required by Schedule 5, Condition 3 of MP10\_0059 as modified (the approval) to the NSW Department of Planning, Housing and Infrastructure (the Department) on 31 March 2026.

The Department has reviewed the Annual Review and considers it to generally satisfy the reporting requirements of the approval and the Department's Annual Review Guideline (October 2015). Please make publicly available a copy of the Annual Review on the company's website.

Please note:

- The Department's acceptance of this Annual Review is not an endorsement of the compliance status of the project.
- Following submission of the Annual Review you are required to review and if necessary, revise the strategies, plans, and programs required under this approval, in accordance with the approval.

Should you wish to discuss the matter further, please contact ██████████, Senior Compliance Officer on ██████████ or email [compliance@planning.nsw.gov.au](mailto:compliance@planning.nsw.gov.au)

Yours sincerely

████████████████████  
██████████

Team Leader - Hunter  
Compliance

As nominee of the Planning Secretary